

ZRK24



ADD DEVICE (QUICK START)	5
CREATE GROUP	7
CREATE SCENE	9
DELETE DEVICE	13
ASSIGN ZRK24 TO NETWORK	14
LISTENING MODE	15
COPY CONTROLLER	15
TRANSFERRING PRIMARY CONTROLLER FUNCTION	16
RESET NETWORK	17
RESET CONTROLLER	18
TOUCH SCREEN SETTINGS	19
WARRANTY	21



PRODUCT DESCRIPTION

The ZRK24 touch screen is a multi-channel Z-Wave radio controller. It is designed to remotely control FAKRO Z-Wave devices, eg. FTP-V Z-Wave roof windows or ARZ Z-Wave roller shutters. The advanced ZRK24 controller makes it possible to operate Z-Wave devices individually or in 24 groups. It has the option to name devices and groups of devices. The status of the device can be read using the controller. In addition to manual control, the ZRK24 can automate the operation of Z-Wave devices using the functionality called Scenes. Defined scenes can be activated manually or with an internal timer.



PRODUCT DESCRIPTION

- | | |
|---|---------------------------|
| ① | Light intensity sensor |
| ② | Touch screen |
| ③ | Keyboard switch |
| ④ | micro USB charging socket |

MAIN MENU

- | | |
|---|---------------------------|
| a | Devices |
| b | Groups |
| c | Scenes |
| d | Settings |
| e | Additional functions menu |

TECHNICAL SPECIFICATION

Power supply:

Battery LiON 1500mAh 3.7VDC –
charged using micro USB wire –
5V network charger; max 1A

Working temperature:
0°C to +40°C

Screen:

3.5" 640x480

Weight:

0.128 kg

Dimensions:

98x80x25mm

Radio protocol:

Z-Wave

Radio reach:

up to 20 m in a building

Radio frequency:

EU – 868.4 MHz;

AS/NZ – 921.42 MHz;

US/Canada – 908.4 MHz;

RU – 869 MHz

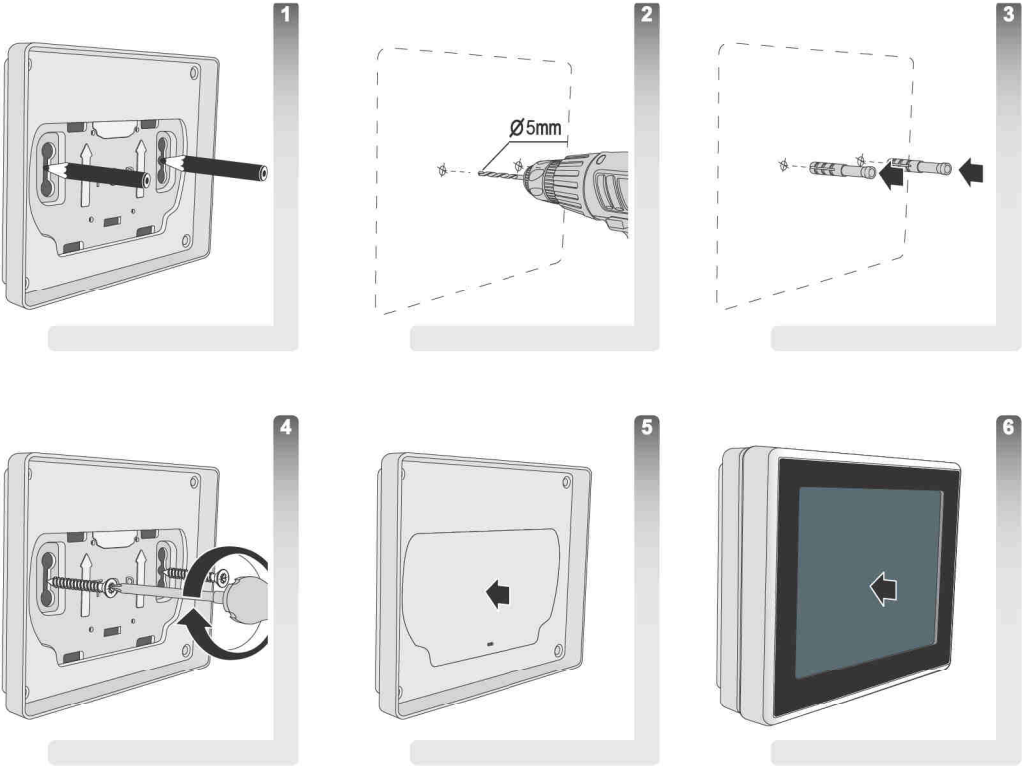
(depending on version)

CHARGING

To charge the device, connect it to the charger via the microUSB port.

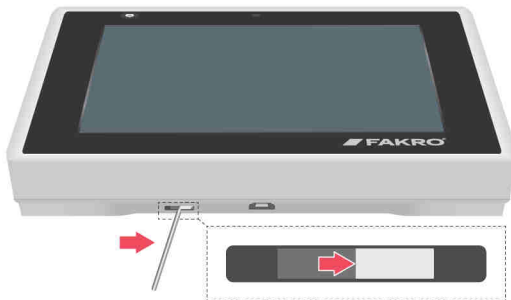


HOLDER ASSEMBLY



FIRST START

Run the keyboard with the master switch.



INITIAL SETUP



Select your language and confirm.



Set time and confirm.



Set date and confirm.

ADD DEVICE (QUICK START)

With this function you can add the device to the Z-Wave network. Only the PRIMARY controller can add devices.



Press the Settings button and then the Z-Wave Settings button.



Press the Add Device button (section 1).



Enter the device being added into programming mode*



Device added to the network. Confirm with the button.

Programming mode can be started* in two ways:

1. Remotely by activating the AUTOINCLUSION mode on the device being added. The AUTOINCLUSION mode is available for 10 minutes after turning on the power.
2. Manually by pressing the P programming button on the device being added.

*Information on how to start the programming mode can be found in the manual of the device you want to add to the network.



Once you add your device, follow the on-screen instructions. Press the button to select the icon for the added device.



Use Up and Down buttons to select the icon that matches the type of the added device and confirm with the button.



Press the button if you want to change the device name.



Set your own name on the keyboard or leave the default one and confirm with the button.



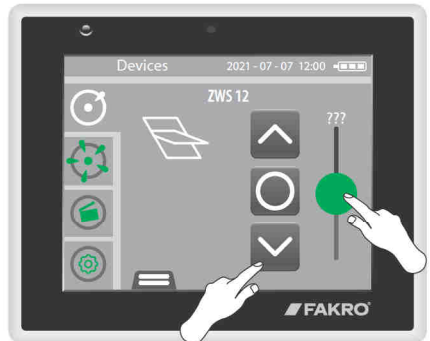
Press the button if you want to select the location of the device icon on the screen.



Specify the destination of the device icon.



Go to the Devices section and press the icon of the added device.



Use the slider or buttons to control the device.

CREATE GROUP

Adding multiple devices to the group allows you to control them simultaneously from within the group. The assumption is that the devices in the group are of the same type and are controlled with the same commands, eg. OPEN-CLOSE or TURN ON-TURN OFF. Adding devices with different functionalities to the group may cause some devices in the group to operate in non-intuitive manner.



Go to the Groups section.



Expand the bottom menu.



Add a new group.



Go to the Devices section.



Press and hold the device icon until the Options menu appears.



Scroll the roll to the Add to group position and confirm with the button.



Press the icon of the created group.



Confirm the list of devices in the group.



Use the slider to check the group for its correct operation.



Follow the same procedure when adding other devices of the same type to the group. Group control makes sense for devices with similar functions (eg. lighting, window screens) and allows you to activate many such devices simultaneously. You can edit the created group by changing its name, icon or position of the group button. To do this, press and hold the group button and use the drop-down menu.

CREATE SCENE

By adding devices to scenes you can manually or automatically control many devices of different types (eg. blinds, actuators, lighting, switches). Scenes, unlike groups, allow you to drive devices to different positions. For example, it is possible to set a scene where windows and blinds open at 9:00 from Monday to Friday, but it is also possible to create more complicated scenes, eg. close blinds, turn on or dim the lights, start the heating, etc. The ZRK offers the option to create 24 scenes. To take advantage of the ZRK 24's options, first add scenes, then name them and add devices to them.

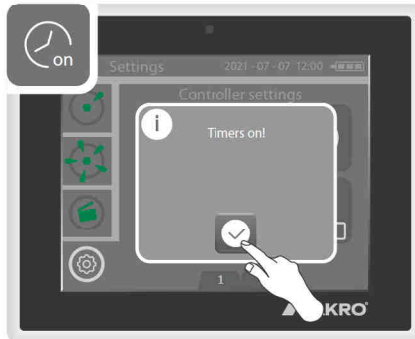
ACTIVATION OF TIMERS



Press the Settings button and then the Keyboard Settings button.



Select the first section.



Timers on/off.

Scenes will not be activated automatically when timers are off.

SCENE SETTING



Go to the Scenes section.



Expand the bottom menu.



Press the Add New Scene button.



Go to the Devices section.



Select the device you want to add to the scene.



Set the position of the device you want it to be once the scene is completed.



Go to the Devices section.



Hold the device icon until the options menu is displayed.



Scroll the roll to the Add to Scene position and confirm with the button.



Select the scene where you want to add the device.



Confirm the list of devices added to the scene.



Scene added.



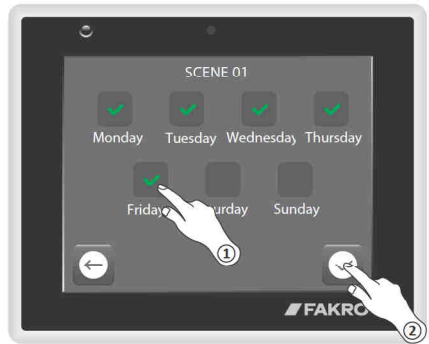
Go to the Scenes section.



Hold the device icon until the options menu is displayed.



Set "Day" on the roll and confirm with the button.



Select days of the week you want the scene to run and confirm with the button.



Hold the device icon until the options menu is displayed.



Set "Time" on the roll and confirm with the button.



Set the scene activation time using the roller and confirm with the button.



Enter the scene.



Check the scene for its correct operation.

i In the scenes menu, you can also change the scene name as well as deactivate the scene, eg. when going on holiday.

DELETE DEVICE

With this procedure you can delete the device from the Z-Wave network (device reset using the controller).



Press the Settings button and then the Z-Wave settings button.



Press the Delete device button (section 1).



Enter the device being added into programming mode



Confirm with the button to delete the device from the Z-Wave network.

ASSIGN ZRK24 TO NETWORK

With this procedure you can add the ZRK24 to the existing Z-Wave network as a secondary controller. The primary controller can be of any type, eg. remote control. If another ZRK24 is the primary controller, information about devices is additionally transferred.



Press the Settings button and then the Z-Wave Settings button.



Press the Learning Mode button (section 1).



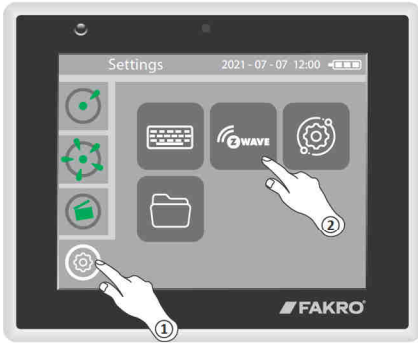
Call the Add to Network function on the primary controller.



Device added to the network. Confirm with the button.

LISTENING MODE

Advanced function. The controller entered into the listening mode allows for remote configuration from another controller such as the Z-Wave Gateway.



Press the Settings button and then the Z-Wave Settings button.



Press the LISTENING MODE button (section 1)



The controller enters the listening mode until 59 seconds have passed since the end of data transmission. Each data transfer resets the counter.

COPY CONTROLLER

With this procedure you can add the secondary controller to the Z-Wave network. Information about devices, groups and scenes is additionally sent to the added remote control. Copying works properly only for controllers with the same functionality (number of groups, scenes).



Press the Settings button and then the Z-Wave Settings button.



Press the COPY CONTROLLER button (section 1).



Run the Learning Mode on the controller added to the network.

The Learning Mode function in the ZRK24 is in the Z-Wave settings. For another remote control - see its manual.

TRANSFERRING PRIMARY CONTROLLER FUNCTION

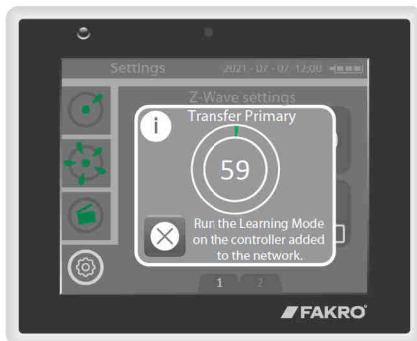
This procedure transfers the Primary controller function to another Secondary controller. This function can also be transferred to the remote control that has not yet been added to the Z-Wave network.



Press the Settings button and then the Z-Wave Settings button.



Press the Transfer Primary button (section 1).



Run the Learning Mode on the controller added to the network.

The Learning Mode function in the ZRK24 is in the Z-Wave settings. For another remote control - see its manual.

RESET NETWORK

NETWORK RESET / PRIMARY CONTROLLER RESET - information about all added devices is removed. Controlling devices is only possible after deleting all devices (page 13) and adding them again (page 5). Due to the lack of the primary controller in the network, it is not possible to further configure the network (adding new devices, etc.).

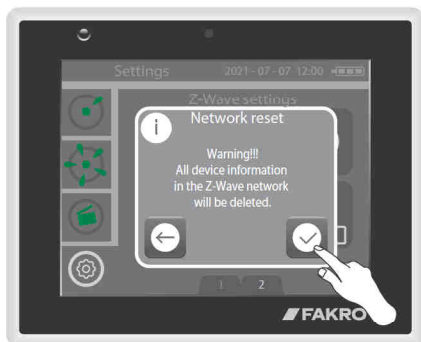
NETWORK RESET / SECONDARY CONTROLLER RESET - information about all added devices is removed. Controlling devices is only possible after adding the controller to the network as **SECONDARY**.



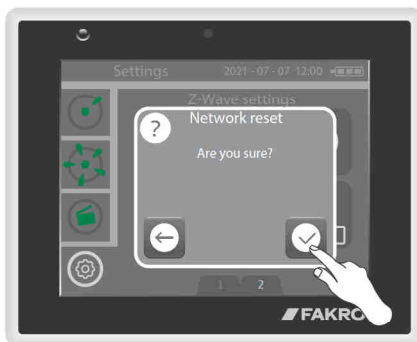
Press the Settings button and then the Z-Wave Settings button.



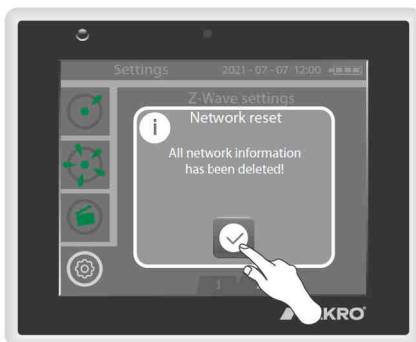
Press the NETWORK RESET button (section 2).



Confirm with the button.



Confirm Network Reset again.



All network information has been deleted. Press the button.

RESET CONTROLLER

This procedure deletes all information about groups and scenes. This procedure does not delete device information. Devices can still be controlled individually. To restore the factory settings of the keyboard, perform both remote control reset and network reset operations.



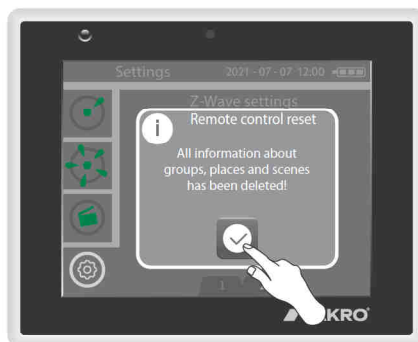
Press the Settings button and then the Z-Wave Settings button.



Press the CONTROLLER RESET button (section 2).



Confirm with the button.



Information has been removed. Press the button.

TOUCH SCREEN SETTINGS

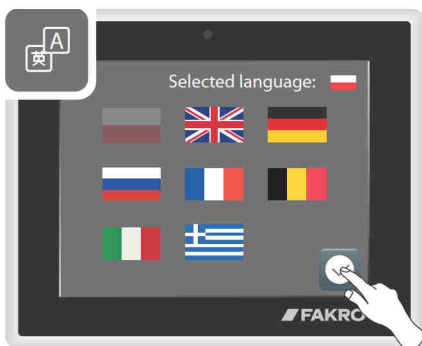
The ZRK24 touch screen comes with the option to change time settings, operation parameters and customise the interface to one's own preferences.



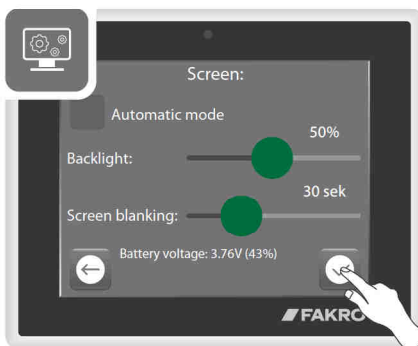
Press the Settings button, then press the Keyboard Settings button.



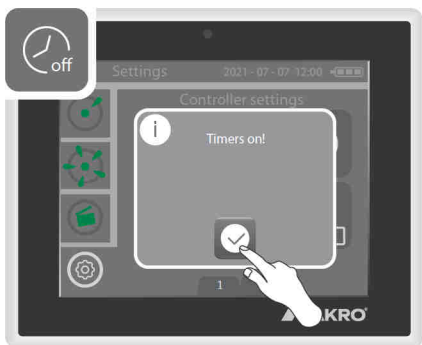
Select the first section.



Language settings.



Screen settings.



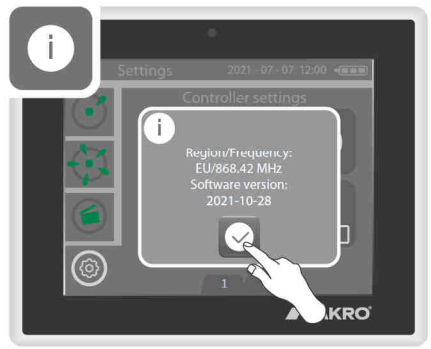
Timers on/off.
Scenes will not be activated automatically when timers are off.



Time settings.



Date settings.



Software information.



Select second section.



Sound on/off.



PL

<https://www.fakro.pl/servis/gwarancja/>



GB

<https://www.fakro.com/service/customer-service/>

Producent:

FAKRO Sp. z o.o.

ul. Węgierska 144A, 33-300 Nowy Sącz, PL

tel. +48 18 4440444, fax +48 18 4440333

www.fakro.com

Quality certificate:

Device

Model

Serial number

Seller

Address

Purchase date

Invoice No.

Signature (stamp) of person installing a device





