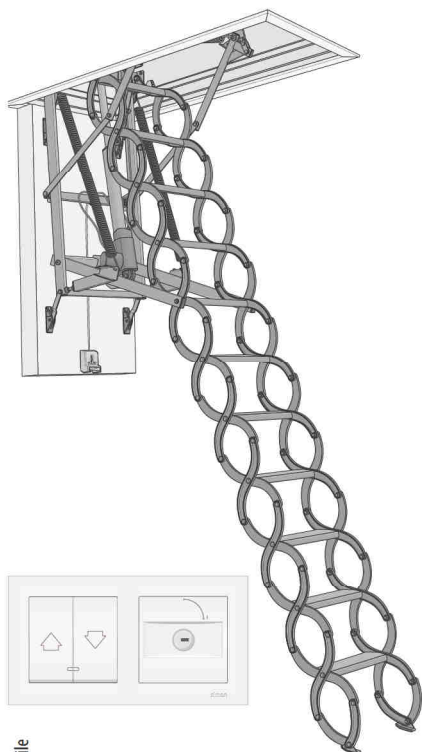


ELECTRICALLY OPERATED LOFT LADDER



LET

ZTMS 



SAFETY RULES	2
WIRING DIAGRAM	3
CONTROLLER INSTALLATION	4
PROGRAMMING BUTTON	6
LOFT LADDER LOCK	6
DECLARATION OF CONFORMITY	6
MANUAL CONTROL	7
EMERGENCY UNLOCK	8
TROUBLESHOOTING	9
WIFI DEVICES COMPATIBILITY	10
QUICK START	10
WARRANTY	11



OPIS ZESTAWU

The set of electrically operated loft ladder consists of scissor ladder, 24VDC actuator, ZTMS control module with wall switches, 24V DC power supply unit.

The control module has a built-in WiFi radio interface for direct control of the loft ladder using a smartphone.

The module also has two potential-free control inputs for wired control using a wall switch.

It is recommended to install a wall lock with a key to prevent unauthorised or accidental use of the loft ladder.

TECHNICAL SPECIFICATION		
POWER SUPPLY UNIT	ACTUATOR	RADIO MODULE ZTMS
Input voltage: 100-240V AC ~50/60Hz Rated power: 120W Output voltage: 24V DC	Power voltage: 24V DC Maximum pushing force: 5000N Actuator working cycle: 10%, max 2min ON/ 18min OFF	Radio protocol: WiFi Reach: do 20m w budynku Frequency: 2.4 GHz Working temperature: -10 do +70°C

SAFETY RULES

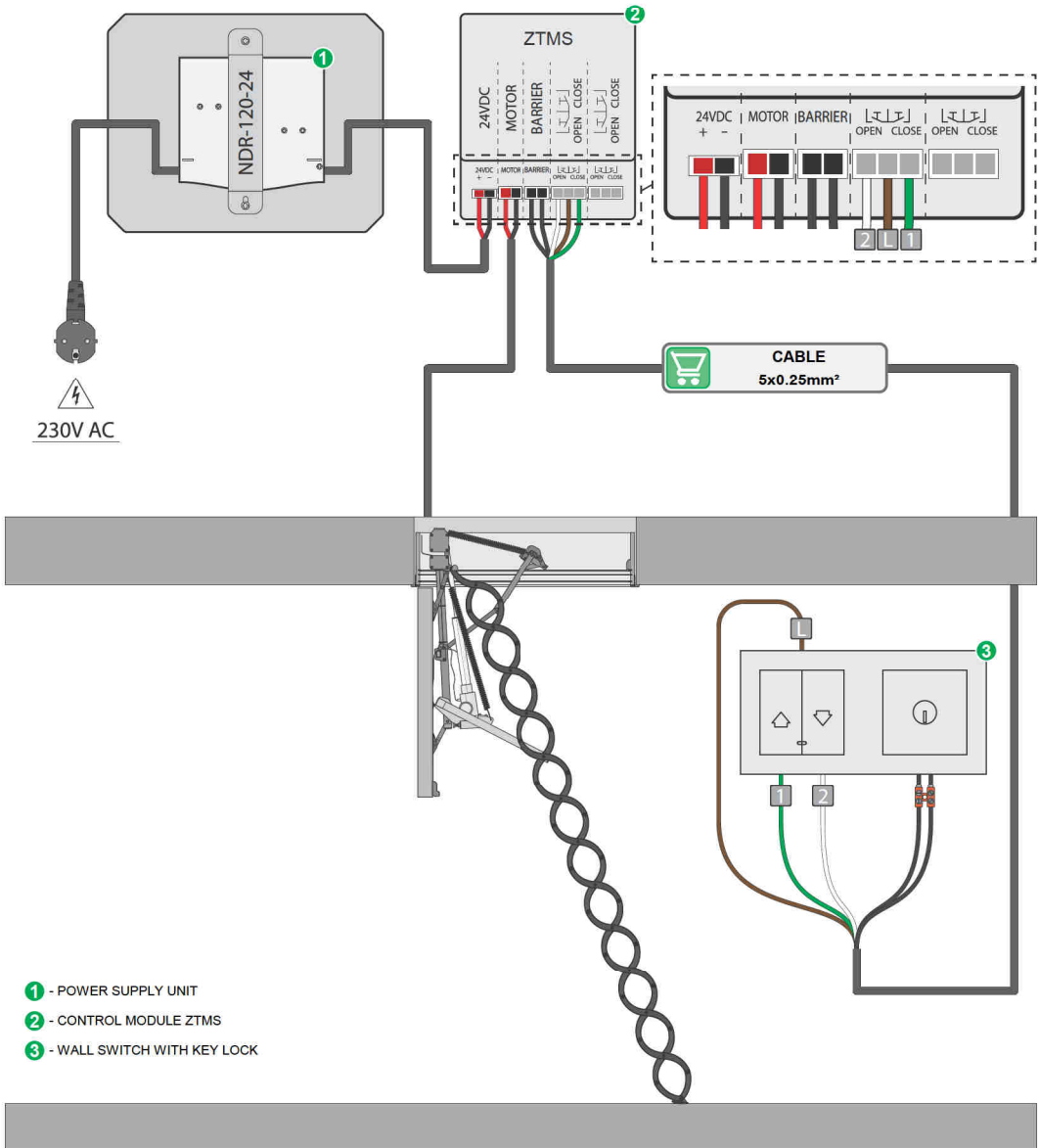


CAUTION! MOVING PARTS, WATCH OUT FOR FINGERS AND OTHER BODY PARTS!

- After unpacking, check the LET type loft ladder elements for any signs of mechanical damage.
- Plastic containers used for packing should be stored out of children reach as they may be a potential source of danger.
- The control set is designed for installation below 2000 m above sea level. Install the set preferably on the ceiling or above the ceiling but below 2 m.
- The installation of the LET type loft ladder and the connection of the system must be performed in accordance with the included instructions by a qualified installer. Incorrect system connection and incorrect installation of the controller cover may be a source of fire hazard.
- A dedicated power supply unit must be used.
- Before connecting the LET type loft ladder, make sure that the power voltage corresponds with motor voltage specified on the data plate.
- The LET type loft ladder must be used according to its intended design.
- The electrical system should include an easily accessible double-pole disconnector with a contact separation of at least 3 mm.
- Potential-free control cables through the connector must not be longer than 30 m.
- The system supplying the set should be protected by means of a 10A fuse.
- Safety rules must be strictly observed. The LET type loft ladder comes with the electric actuator. Using the actuator installed to operate the loft ladder poses a risk of personal injuries. Although the mechanism of the actuator is equipped with an overload switch, forces present there are strong enough to cause physical injuries.
- This LET type loft ladder is not designed for use by people (including children) with reduced physical, sensory or mental capabilities or by people that do not have experience or knowledge of the equipment, unless it is done under supervision or according to the product original user manual provided by a person responsible for their safety.
- Opening and closing of the LET type loft ladder must be performed only in visual contact with the loft ladder being operated.
- A safety zone must be separated around installed LET type loft ladder to eliminate the risk of crushing injuries.
- It is forbidden to activate/fold up the LET type loft ladder when the user is on the ladder.
- It is recommended to install a barrier around the ceiling opening to protect against falling.
- Danger of slipping and falling from the ladder due to improper use.
- Danger of using the LET type loft ladder with a ladder that has not been properly adjusted to the room height (the ladder brackets must have properly adjusted support screw).
- Before each use, make sure that the ladder touches the ground after unfolding.
- The electrical socket and plug must be easily accessible.
- It is required to disconnect the loft ladder from the network using the cable plug included in the set:
- During any activities related to cleaning, adjustment or dismantling the electric parts of the LET type loft ladder.
- During storm with lightning and thunder.
- In the event of visible traces of water stains on the loft ladder components, then their drying and inspecting the LET type loft ladder components is required. During this time opening and operating the loft ladder only by the emergency opening mechanism.
- Loft ladder electric components must not be washed using solvent-based substances or open stream of water (do not immerse in water).
- Any repairs of the LET type loft ladder must be carried out by service authorised by the manufacturer. Any interference with the controller, excluding the connection part, will void the warranty and may result in product malfunction and/or fire hazard.
- The product should be periodically inspected after every 400 cycles of operation (1 cycle = opening – closing) but not less frequently than every 12 months. The app will inform you about the need for inspection. The inspection must be carried out by an authorised person.
- It is required to use personal safety devices and measures due to the risk of injury during maintenance/service operations by a closing/opening hatch or a folding/unfolding ladder.

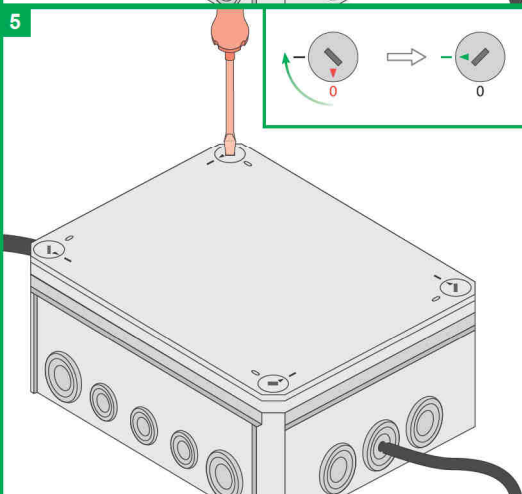
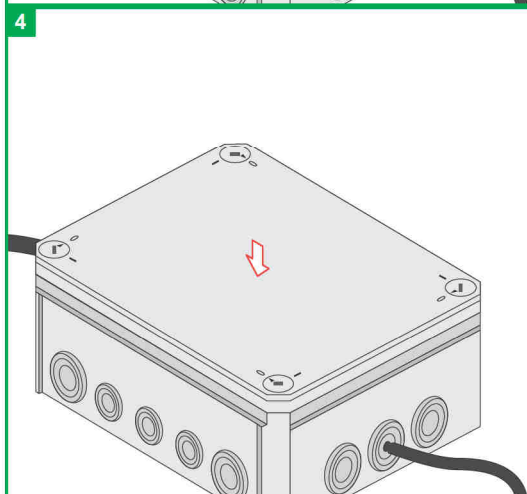
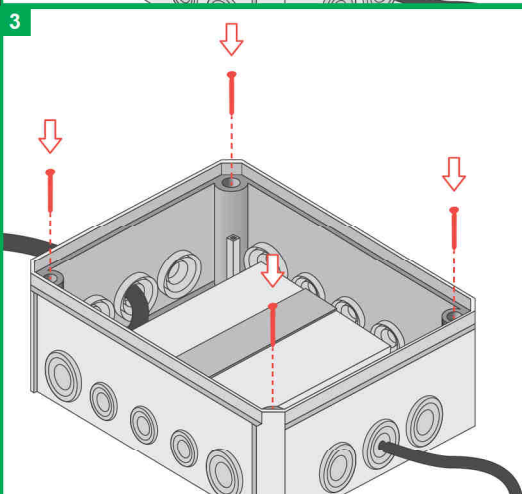
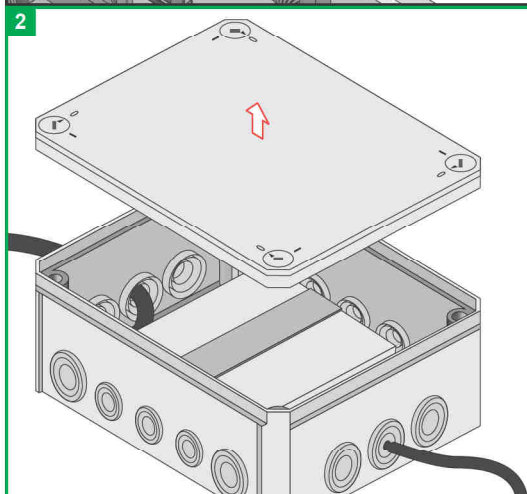
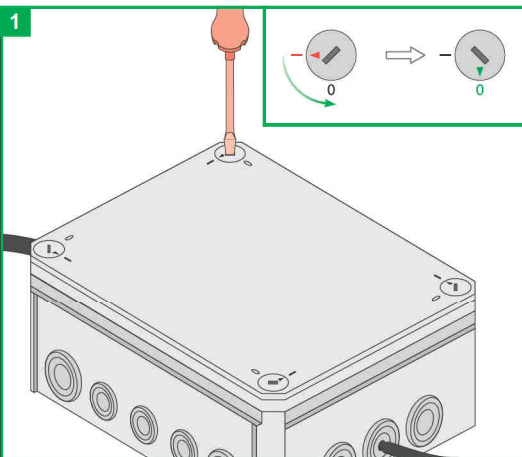
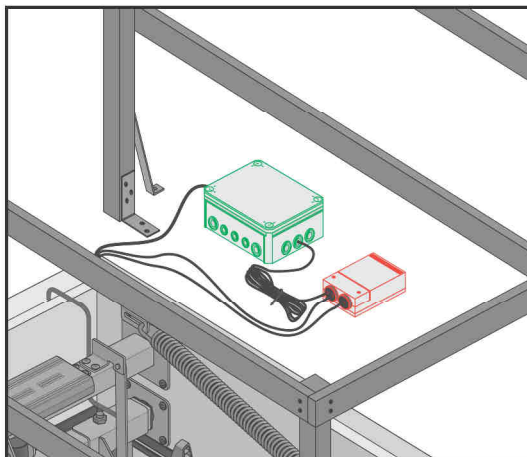
WIRING DIAGRAM

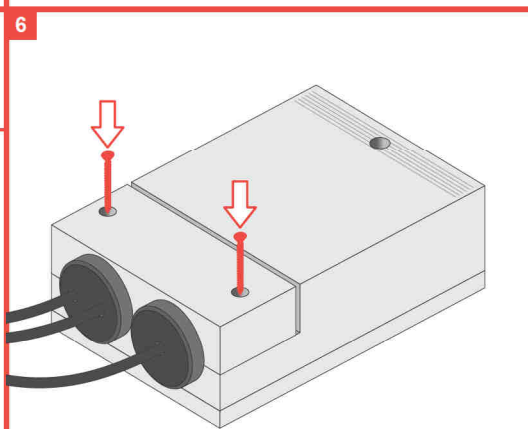
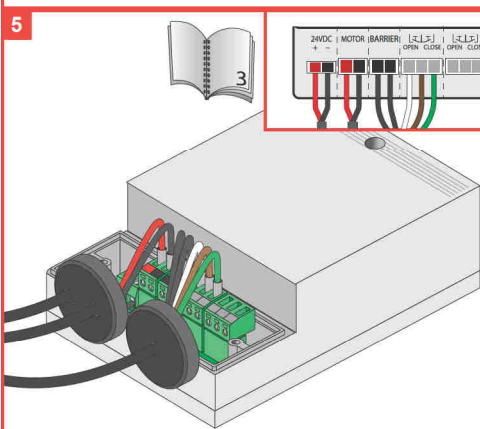
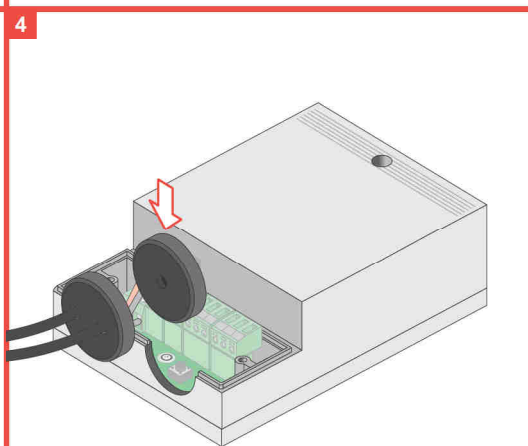
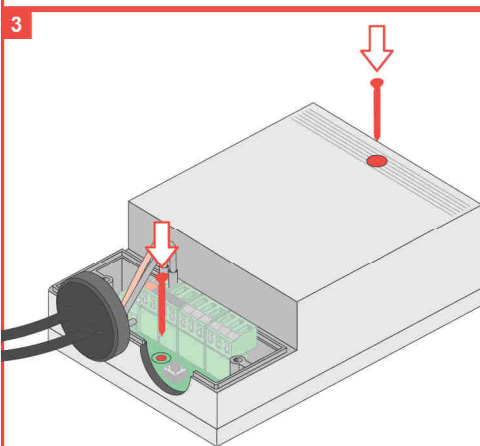
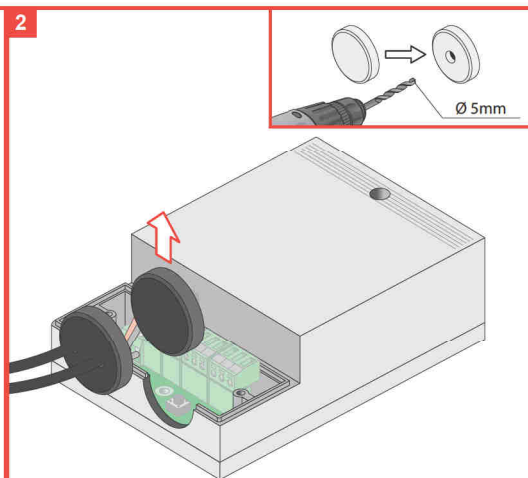
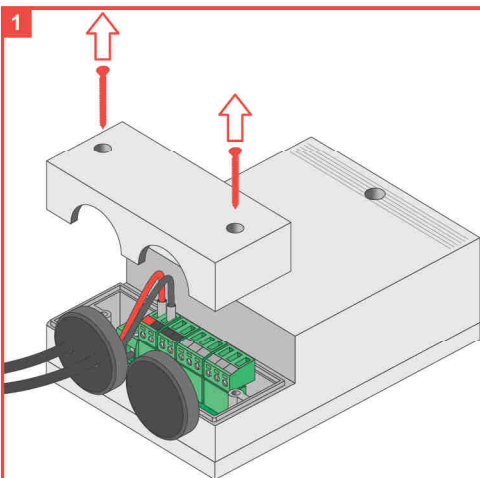
Connect the set to network according to the diagram below.



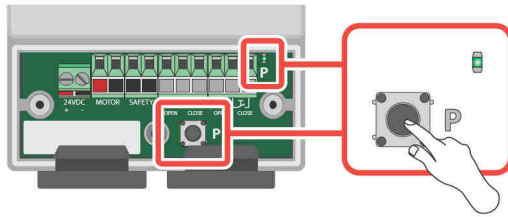
- ① - POWER SUPPLY UNIT
- ② - CONTROL MODULE ZTMS
- ③ - WALL SWITCH WITH KEY LOCK

CONTROLLER INSTALLATION





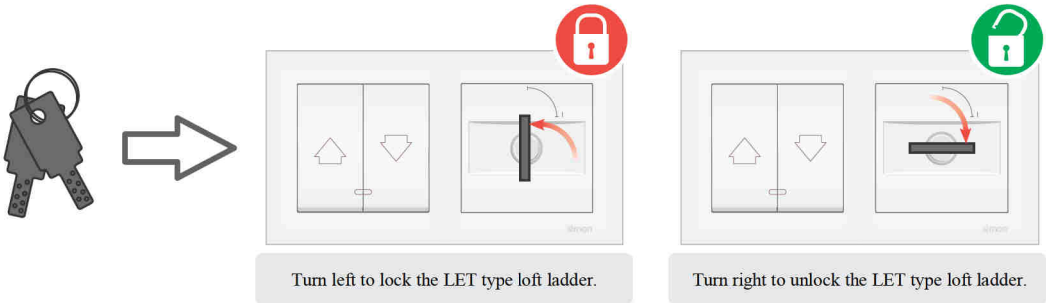
PROGRAMMING BUTTON



Enter the loft ladder into the programming mode by pressing the P programming button.

LOFT LADDER LOCK

It is recommended to install a wall lock with a key to prevent unauthorised or accidental use of the loft ladder. The use of a key lock in the wall switch prevents accidental activation of the loft ladder and use by children or unauthorised persons.



DECLARATION OF CONFORMITY



FAKRO Sp. z o.o. hereby declares that a type of radio device LET complies with the RED Directive 2014/53/EU. The full text of the EU Declaration of Conformity can be found at:
<https://www.fakro.com/cc-declarations/search/>



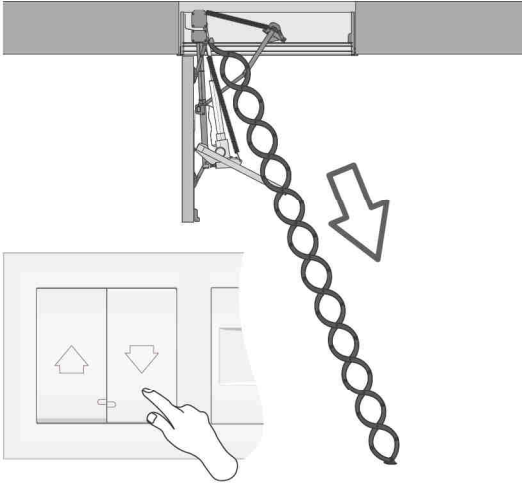
COMPLIANCE WITH THE WEEE DIRECTIVE

Devices marked with this symbol must not be disposed of or thrown away as household waste. It is the user's responsibility to deliver devices that are worn out to the designated recycling area.

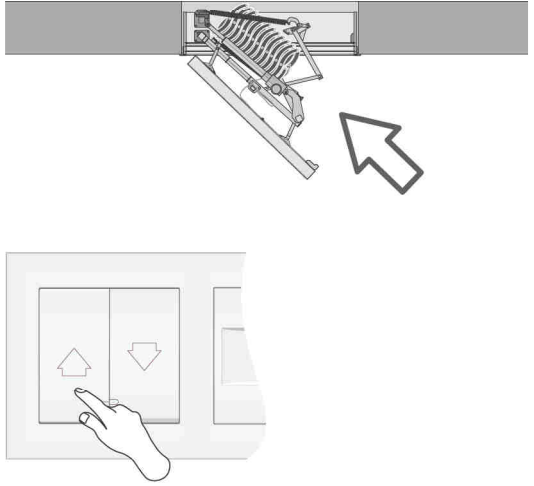
MANUAL CONTROL



Caution!!! Before running, separate a protective zone under the LET type loft ladder.



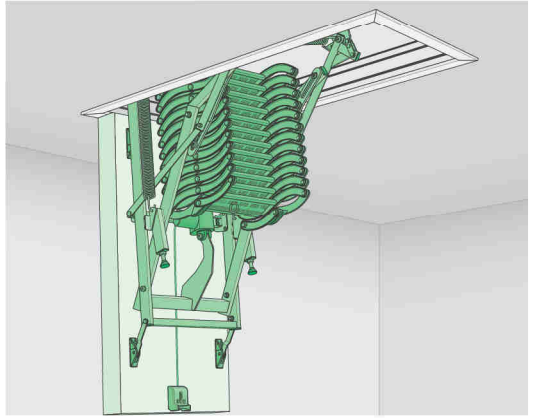
Hold the "DOWN" button to open the LET type loft ladder.



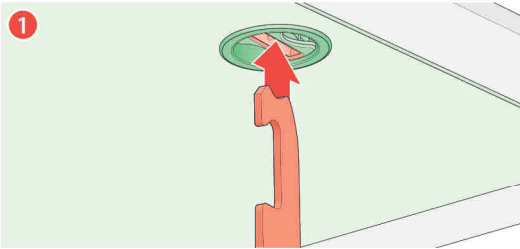
Hold the "UP" button to close the LET type loft ladder.

EMERGENCY UNLOCK

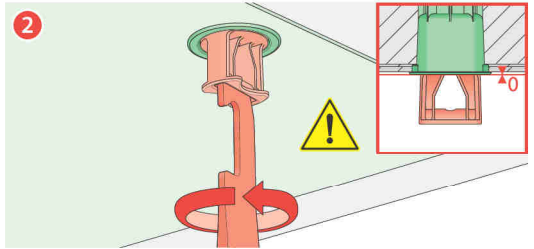
In the event of a power outage, the LET type loft ladder can be manually opened and closed using a mechanical emergency unlock. In connection with the operations described in this chapter, observe the following safety instructions in particular.



UNLOCKING



Place the tip of the rod in the catch recess on the hatch.



Turn to the left until the catch element is flush with the hatch plane (diagram). This operation can also be performed manually, without using a rod.

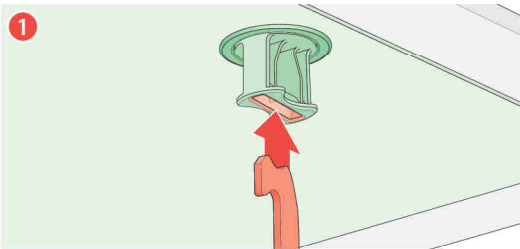
The actuator is unlocked.

The LET type loft ladder can be unfolded and folded up manually.

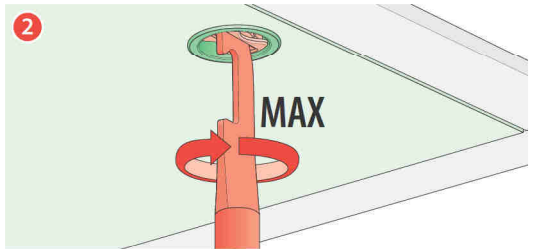


Further unscrewing of the catch may result in damage to the set.

LOCKING



Place the tip of the rod in the catch recess on the hatch.



Turn to the right until fully screwed in. This operation can also be performed manually, without using a rod.

The actuator is locked.

The LET type loft ladder can be unfolded and folded up electrically.



Danger due to people being trapped! People may be locked up in the attic. Failure to free these people may result in serious injury or death.

The emergency unlock must be regularly checked for correct operation from the inside and, if necessary, from the outside as well. Defects must be promptly repaired in a professional manner.



Danger due to moving LET type loft ladder components! When the emergency unlock is activated, the ladder is unlocked and may fall unexpectedly. This may result in serious injuries.

Use extreme caution when folding up / unfolding the LET type loft ladder when using the emergency unlock. No bystanders are allowed in the area of the LET type loft ladder being folded up / unfolded.



The emergency unlock is only intended to open or close the LET type loft ladder in the event of a failure. The emergency unlock function is not intended for regular opening and closing of the loft ladder. This may damage the actuator or the loft ladder. It is not recommended to use the ladder in the emergency mode.



The unlocking function can only be used in emergency situations, eg. a power failure.



During the emergency unlock the LET type loft ladder may unfold on its own or fall unexpectedly quickly due to improper weight balance and performance characteristics of the scissor ladder. The LET type loft ladder structure may be damaged.



The locking and unlocking operation can be performed with the LET type loft ladder open and closed and in any position of the ladder while observing the above safety instructions. Do not run the LET type loft ladder electrically when performing the emergency locking and unlocking operation as this may damage the actuator clutch.

TROUBLESHOOTING

POSSIBLE CAUSE

SOLUTION

1. It is not possible to operate the loft ladder using the smartphone app and control button.

No power to the control set.

Check whether the main circuit supplying the control set is switched on. Unlock the loft ladder and open manually according to the instructions provided, if necessary.

The key switch position is set to "off".

Check the position of the switch key and set it to "on".

Break in the switch key circuit.

Check the continuity of the circuit and the correctness of connections.

Break in the actuator circuit.

Check the continuity of the circuit and the correctness of connections.

2. It is not possible to operate the loft ladder using the smartphone app. The control button works.

The device is out of radio network range.

Check if the local WiFi network works properly.

No remote control possible using the smartphone app.

The controller's local WiFi network is disconnected from the Internet, the smartphone app has no Internet connection.

3. It is not possible to operate the loft ladder using the control button. The smartphone app works properly.

The control button is plugged incorrectly or there is a break in the switch circuit.

Check the connection of the control button according to the diagram in the manual.

4. The loft ladder stops at an intermediate position and does not reach the fully open or closed position.

Overload protection blocks the loft ladder from closing.

Remove the obstacle from the loft ladder blocking the closure.

The set overload limit of the controller is too low.

Consultation with the manufacturer's service dept. is required to set the correct limit.

5. When operating the loft ladder using the app, the following message appears: "Your loft ladder requires attention. Perform service".

The service counter of open/close cycles has exceeded the value of 400. The loft ladder should be inspected by the service.

Have the product inspected by qualified personnel. Reset the service counter in the "Settings" menu.



Please note!!! Any repairs to the control system can be performed only by a qualified person and trained by the loft ladder manufacturer.

WIFI DEVICES COMPATIBILITY

The WiFi makes it possible to integrate devices of different categories (lighting, heating, domestic automatic control, etc.). This product can be operated in any WiFi network. A router with Internet access is required.

 All information on adding devices to the Wi-Fi network can be found in user manuals of these products.

 This product is compatible with Tuya Smart and Smart Life app.

QUICK START

FAKRO smartHome APP DOWNLOAD

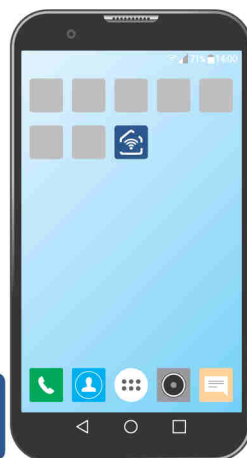
Download FAKRO smartHome app using QR code or install it from Google Play or App Store.



ANDROID



IOS



Follow the installer's instructions.

The app shortcut will be added to the home screen.

FAKRO smartHome INSTRUCTIONS



Scan QR code and go to the instructions of FAKRO smartHome app.

WARRANTY



PL

<https://www.fakro.pl/servis/gwarancja/>



GB

<https://www.fakro.com/service/customer-service/>

FAKRO Sp. z o.o.

Ul. Węgierska 144A, 33-300 Nowy Sącz
Polska

www.fakro.com

tel. + 48 18 444 0 444, fax +48 18 444 0 333

Warranty details:

Product

Model

Serial number

Seller

Address

Purchase date

Invoice no.

Signature (stamp) of person installing a device

