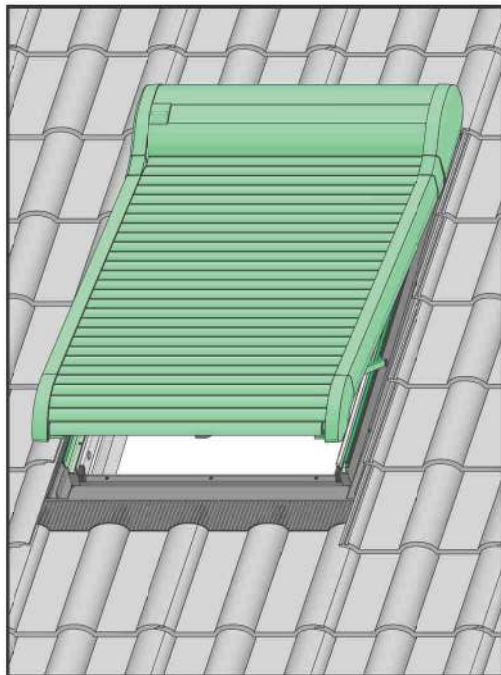
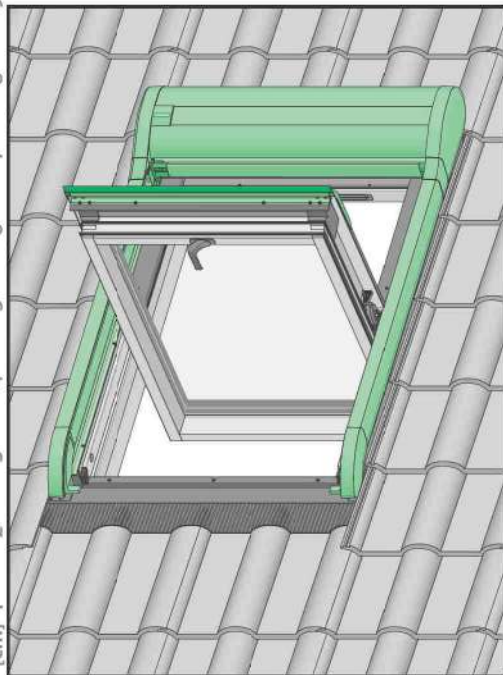




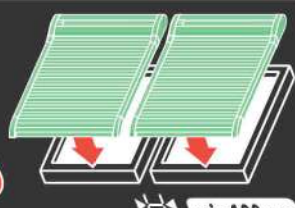
# ARZ Komfort Z-Wave + ZRH1



**ZRH1**



EN	Before installation, it is compulsory to read the NC91V „ORIGINAL INSTRUCTIONS 2/3 Installation and user manual”
1	Remove the cover strip from the battery compartment.
2	Open the window.
3a	Remove screws positioned in the bottom part of the window sash.
3b	Make a hole in the bottom holder of the shutter in the place depending on the window type.
3c	Install the assembly unit holder.
3d	Screw the profile to the window sash having previously drilled the holes.
4, 4a, 4b, 4c	Use mounting washers to make holes in the window hood.

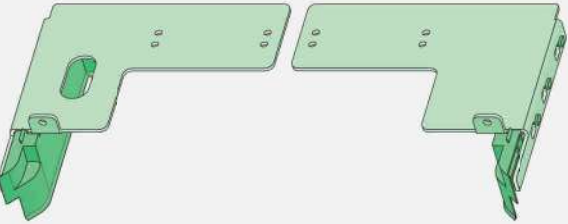
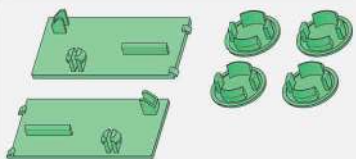
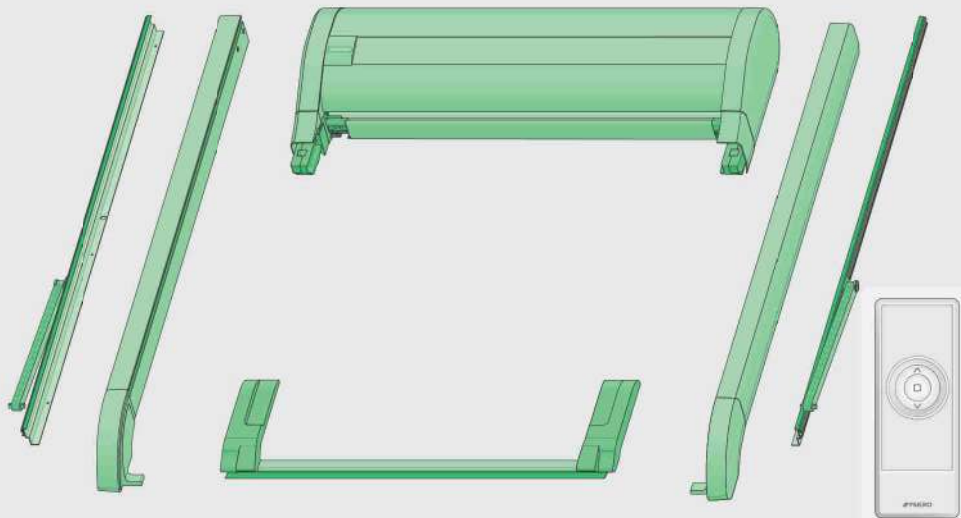




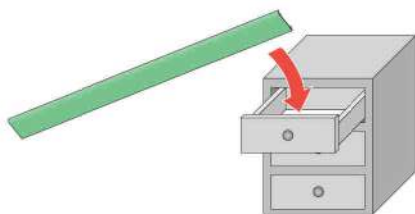
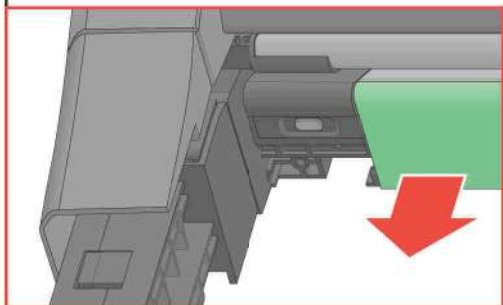
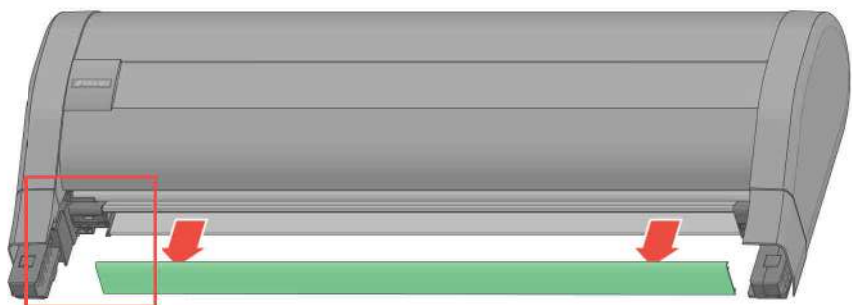
T20



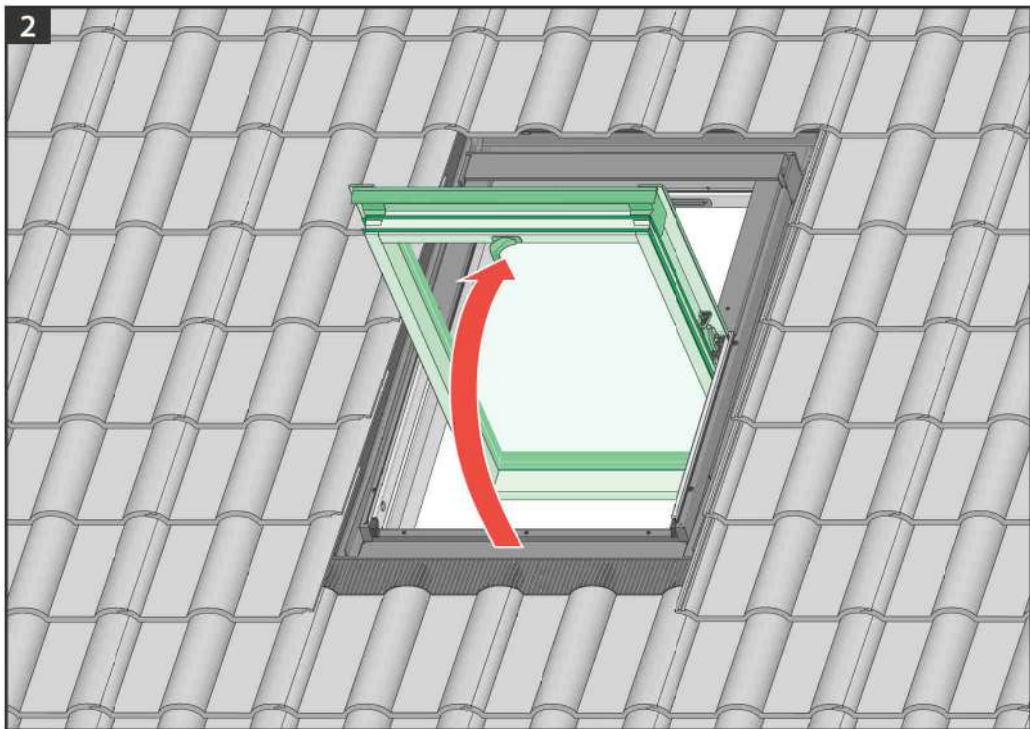
Ø10mm



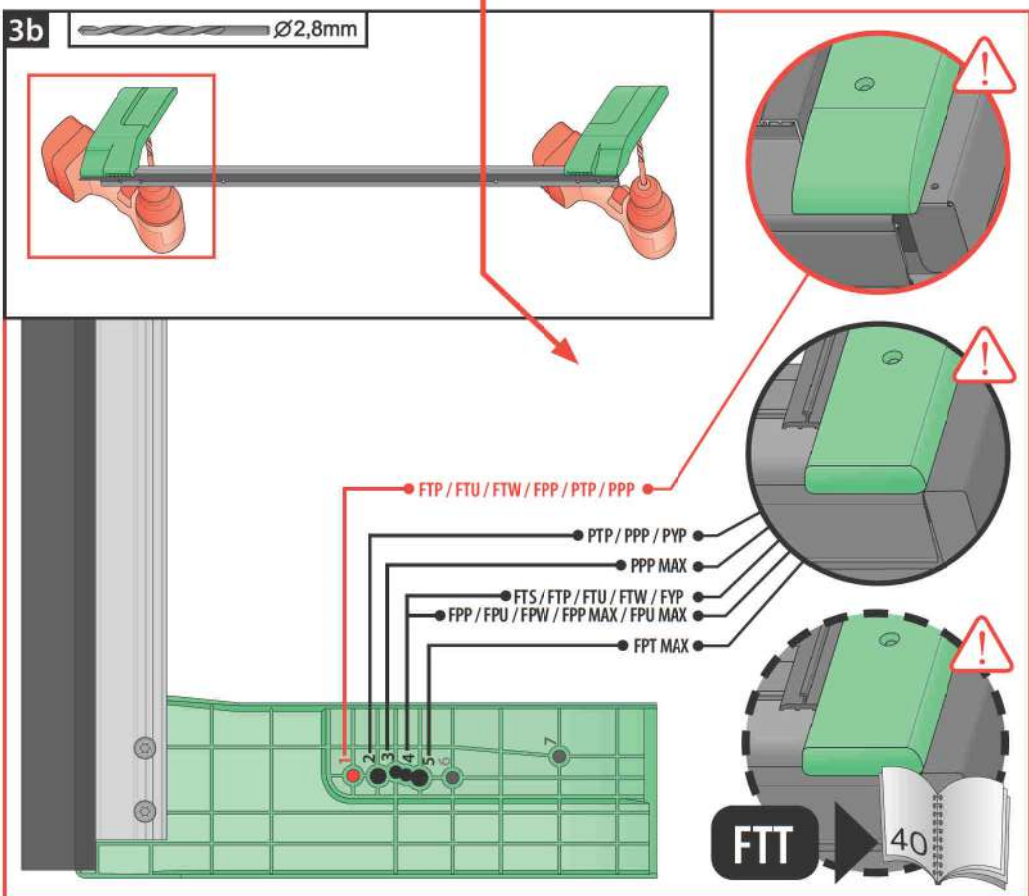
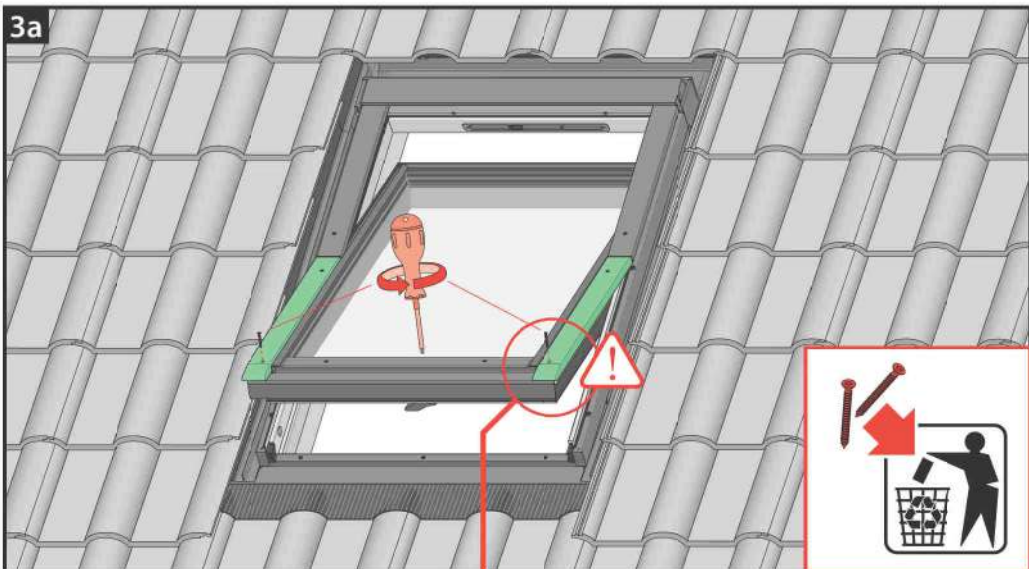
1

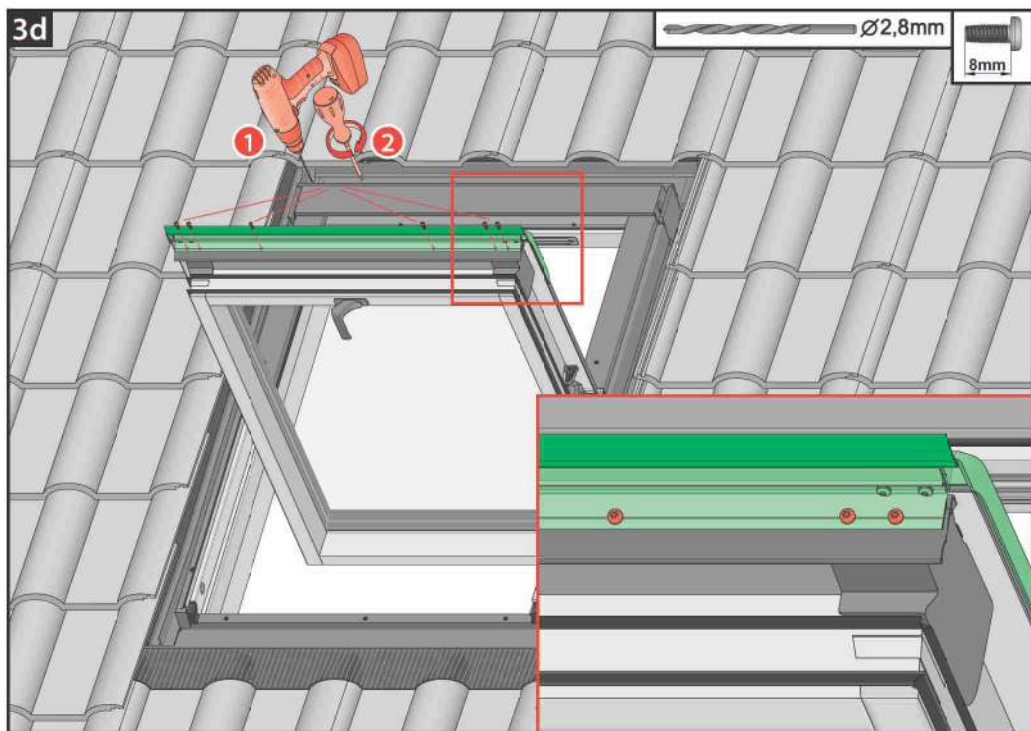
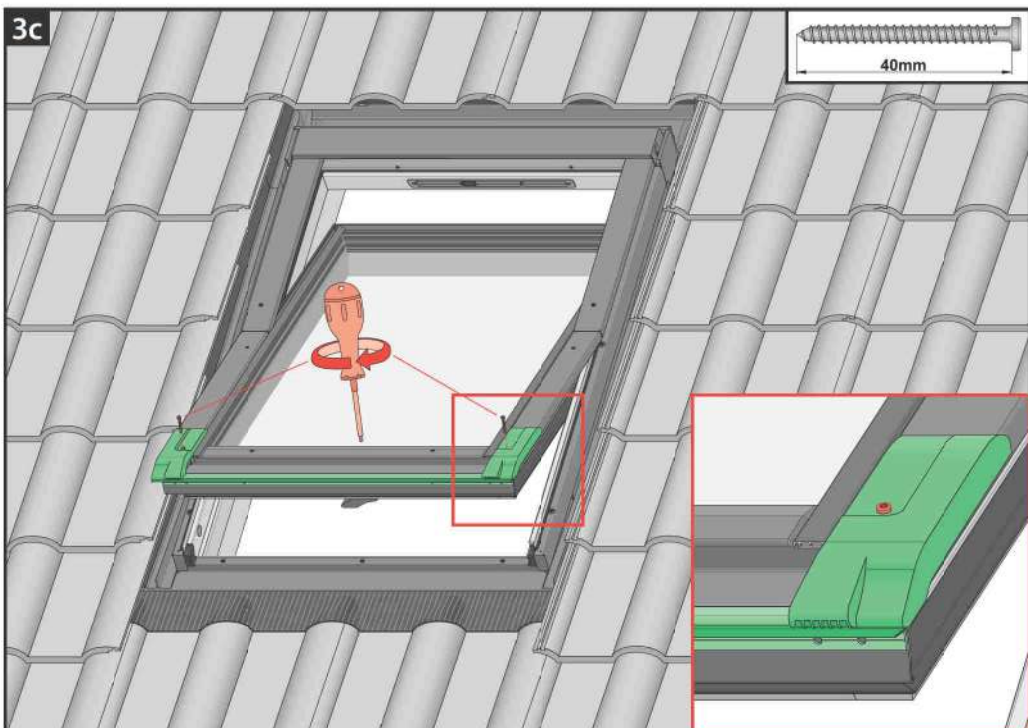


2



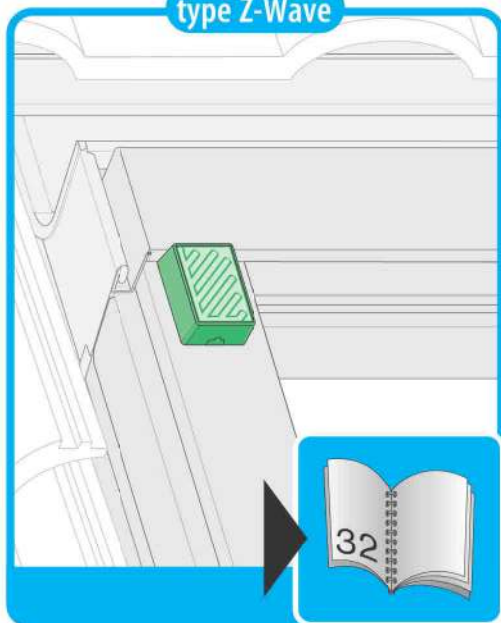
3



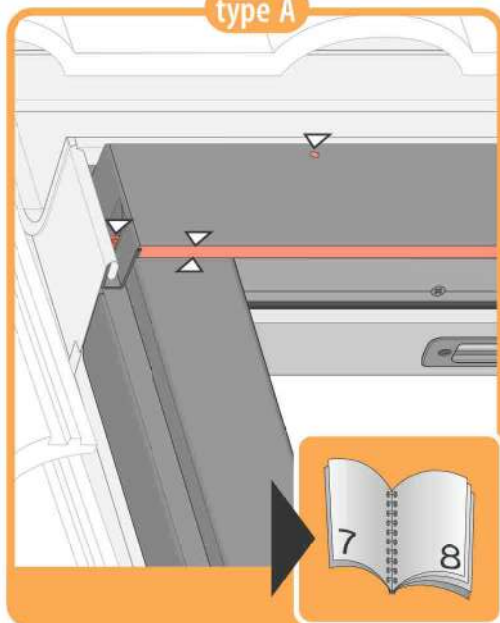




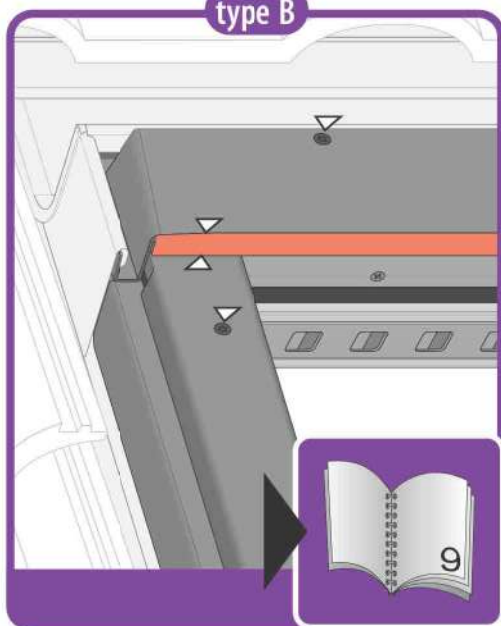
type Z-Wave



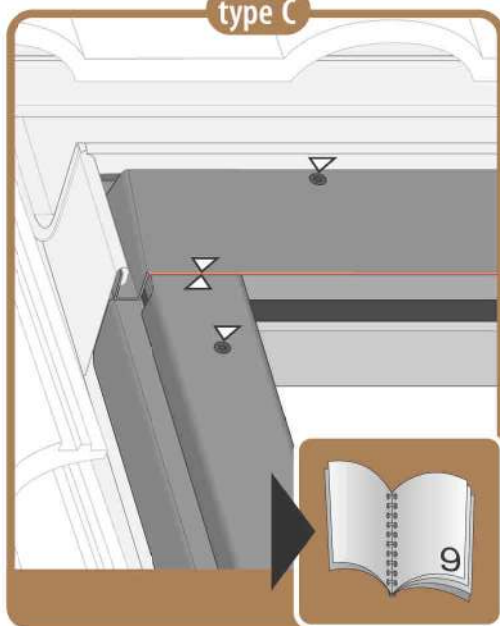
type A



type B



type C



4a type A

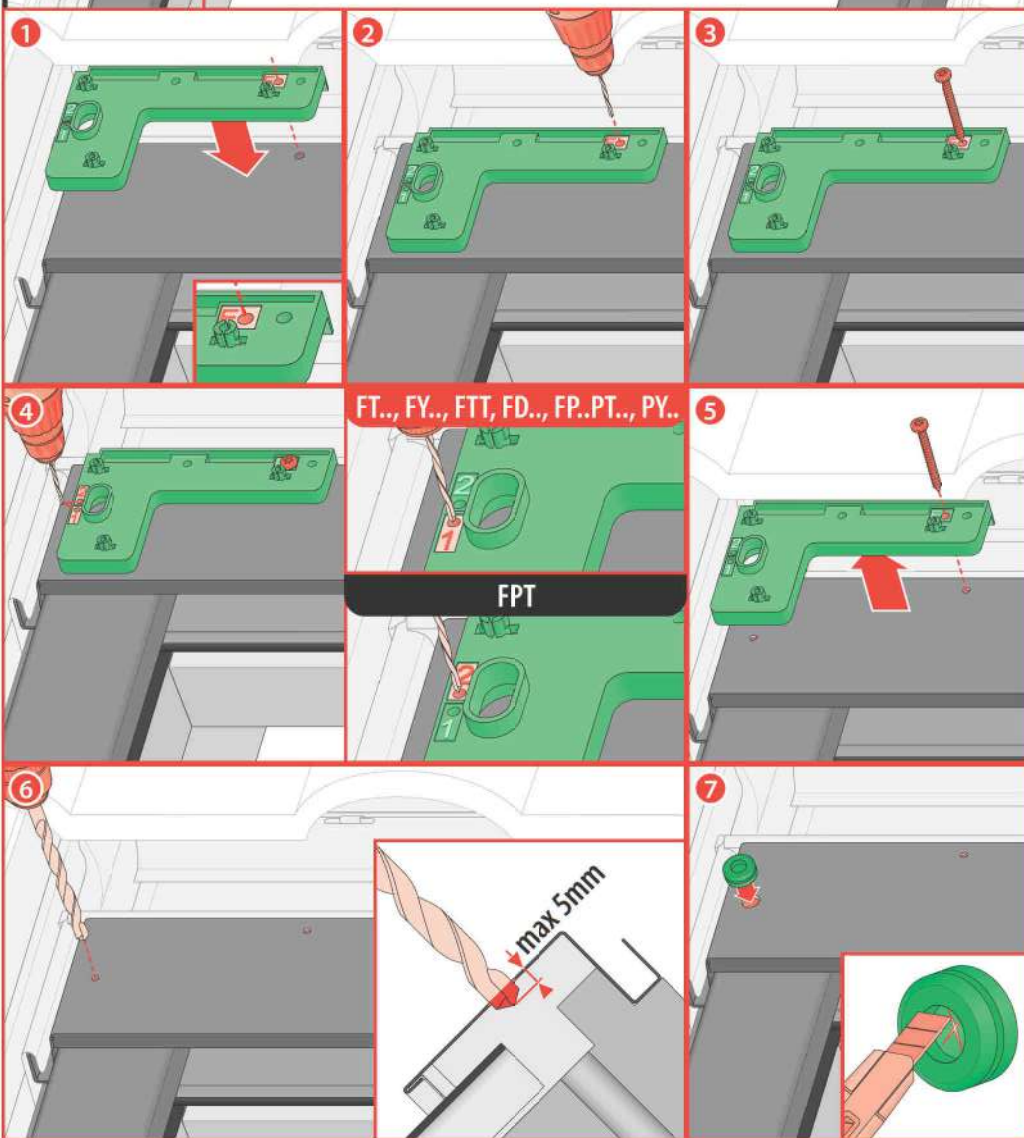
Ø2,8mm

MAX 5mm

Ø10mm

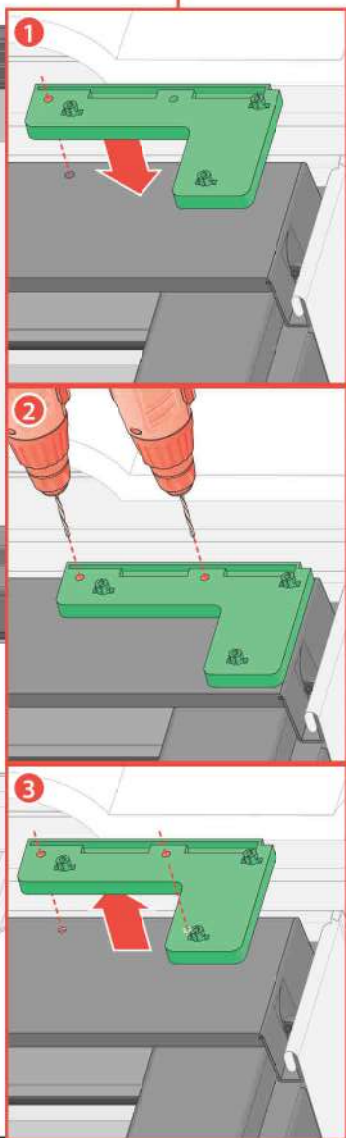
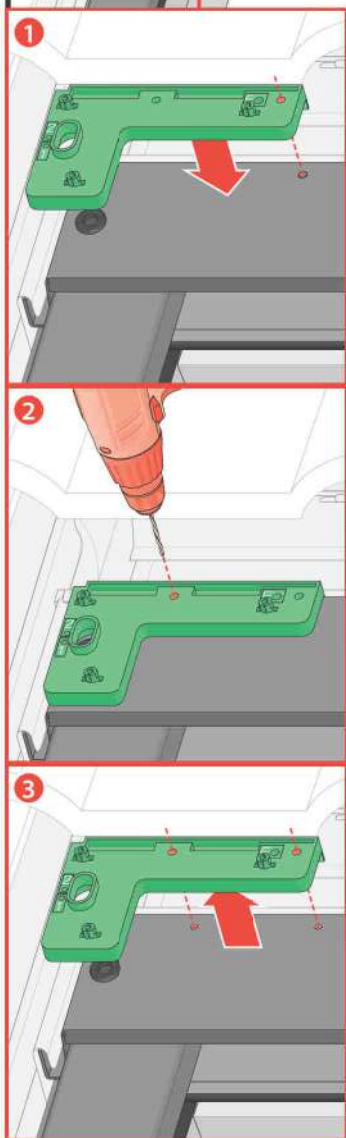
22494L0

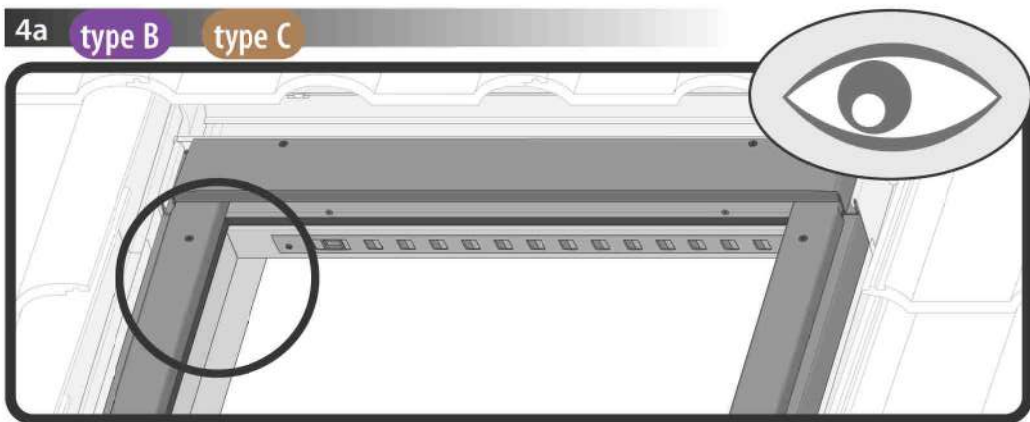
50 mm



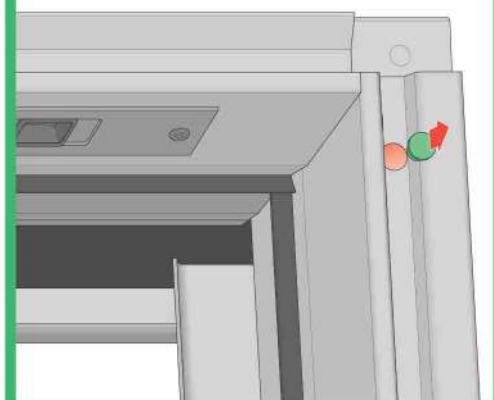
22494L0

22494A0





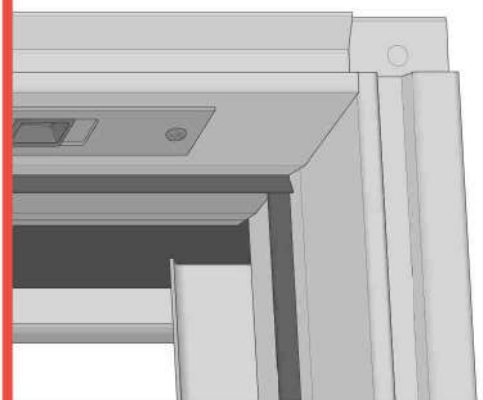
type X



FTS, FTS-V, FTP, FTP-V, FYP, FYP-V  
FTT, FDY-V, FPP preSelect 2  
PTP, PTP-V, PYP, PYP-V



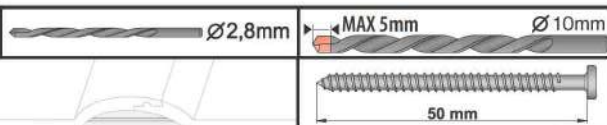
type Y



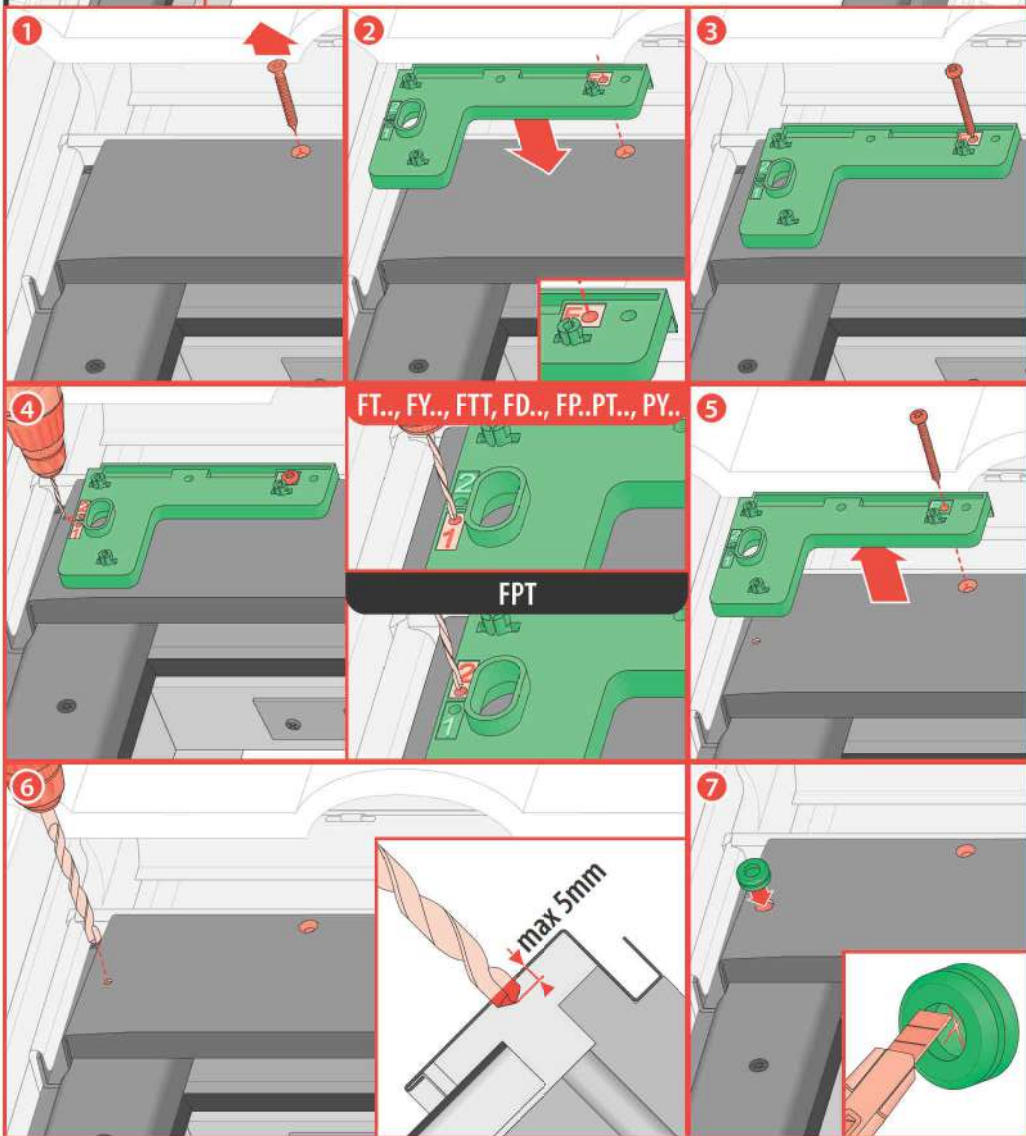
FTS, FTS-V, FTP, FTP-V, FYP, FYP-V  
FTT, FDY-V, FPP preSelect  
PTP, PTP-V, PYP, PYP-V



4b type X

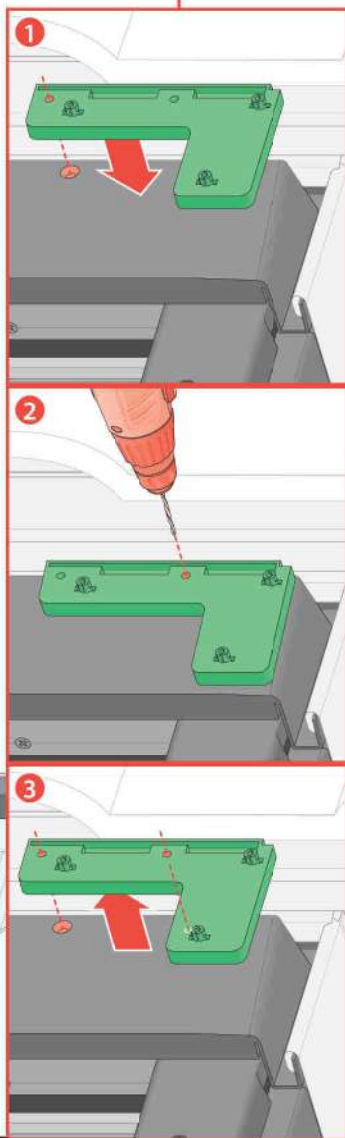
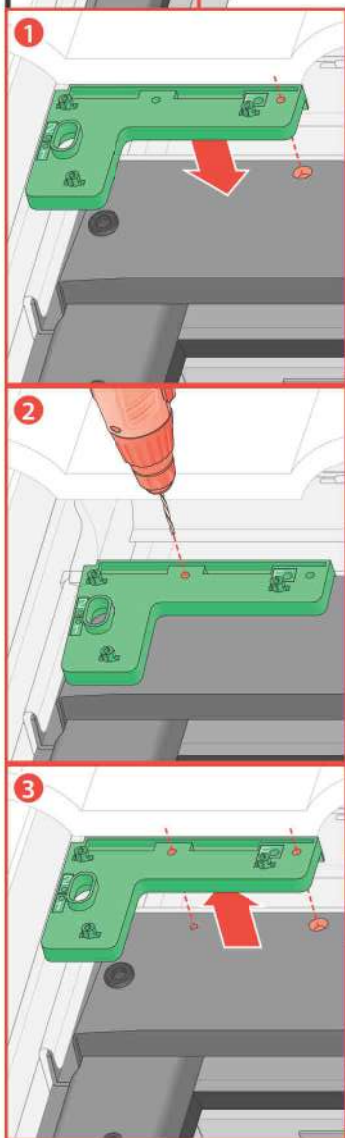


22494L0



22494L0

22494A0



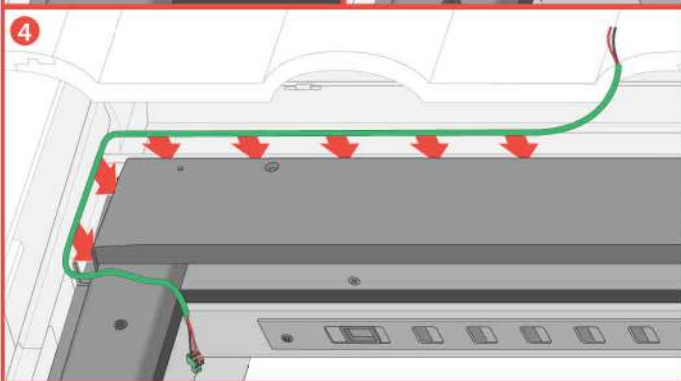
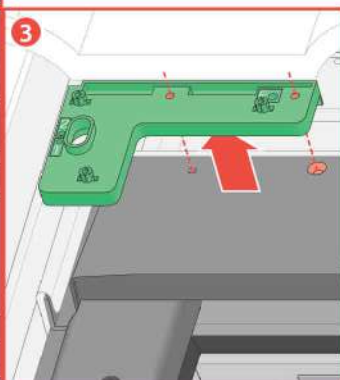
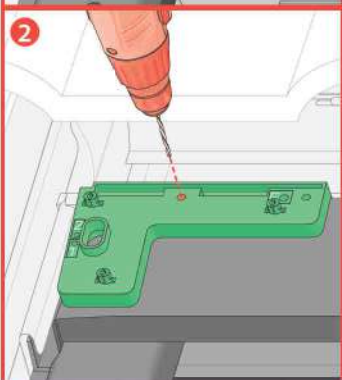
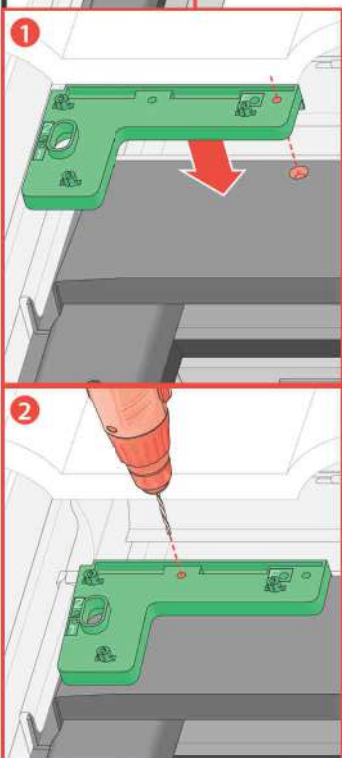
4a

type Y

Ø2,8mm

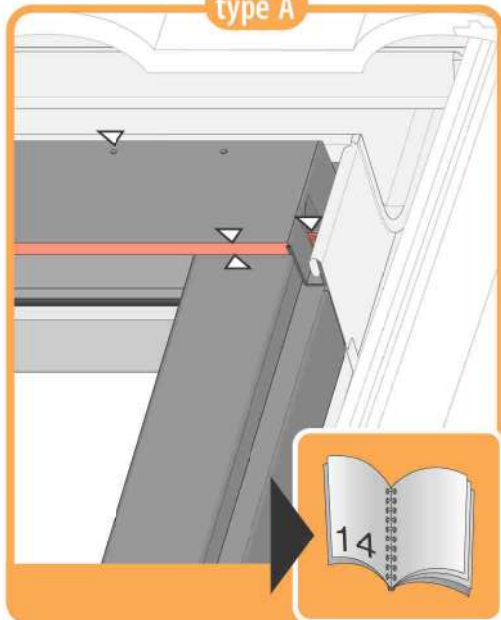
22494L0

22494A0





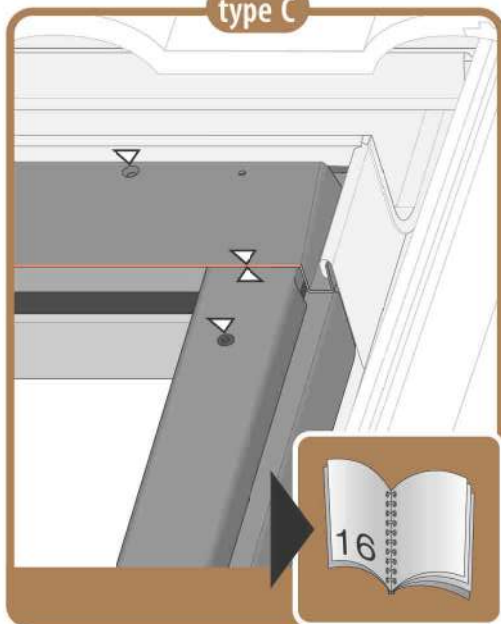
type A



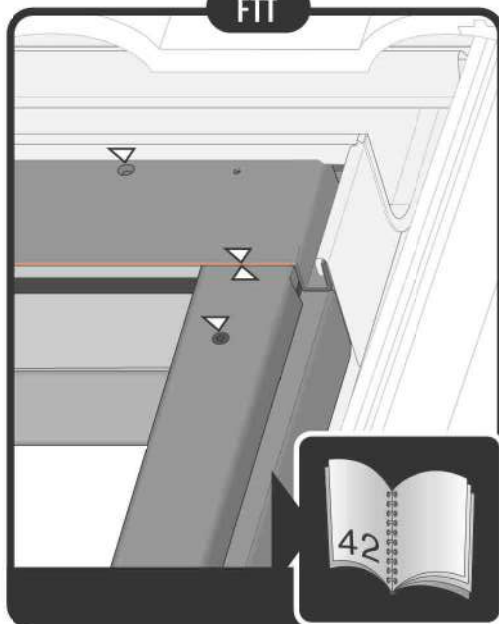
type B



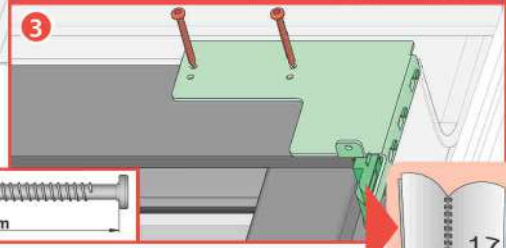
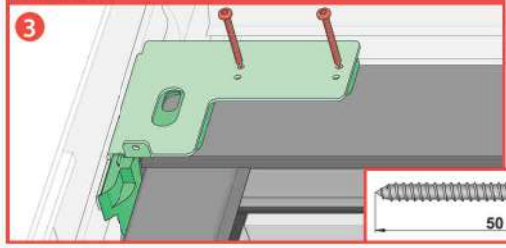
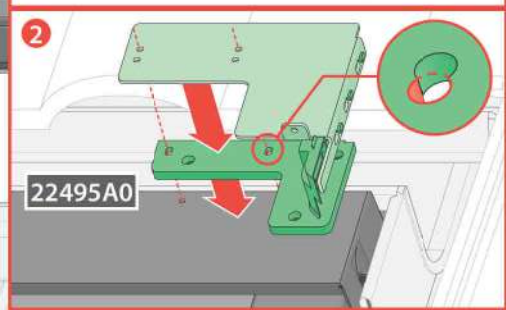
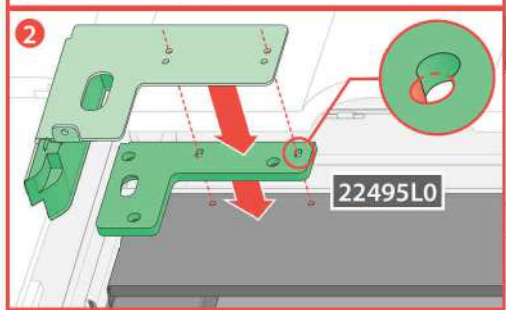
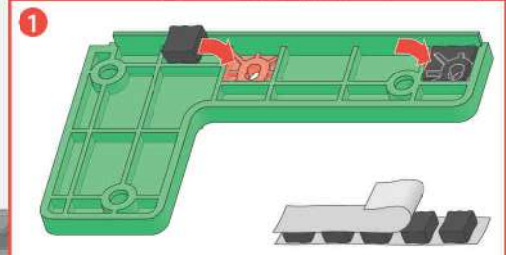
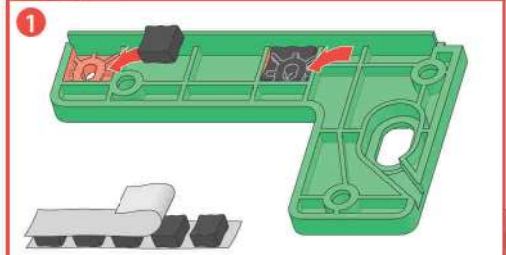
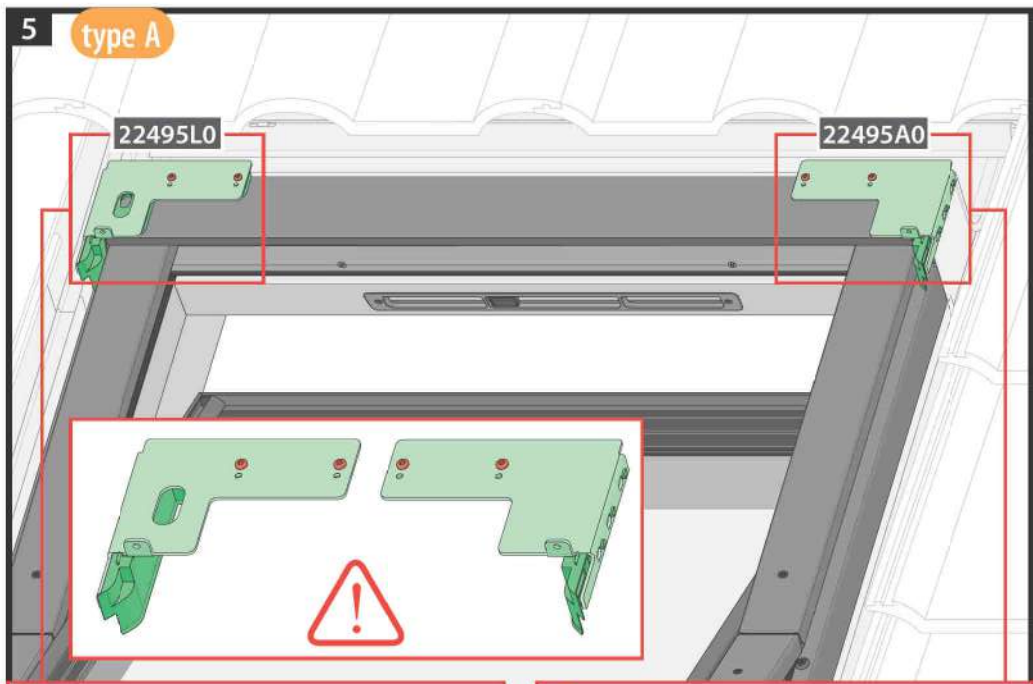
type C



FTT



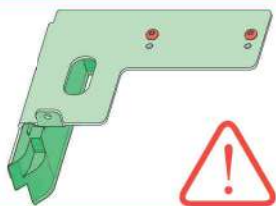
5 type A



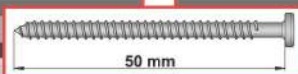
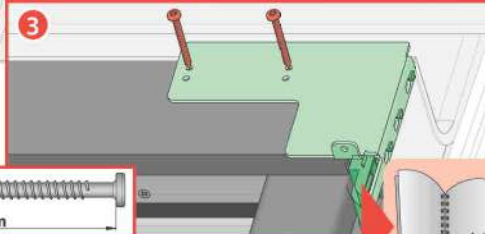
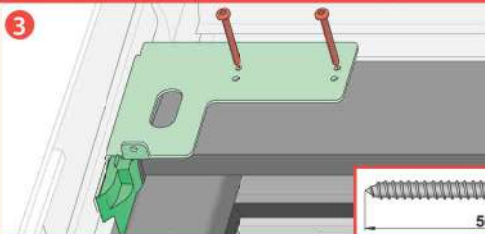
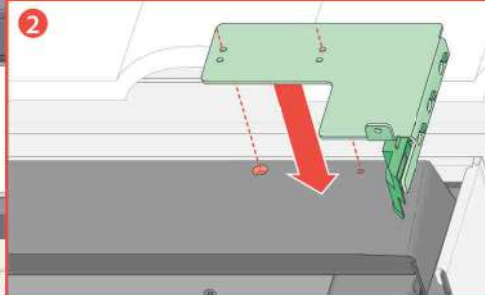
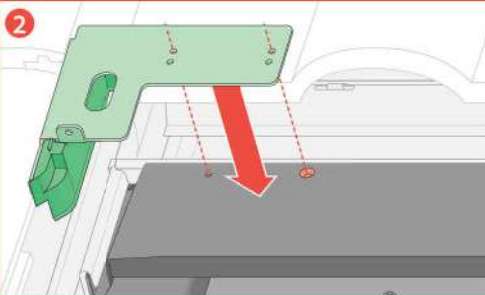
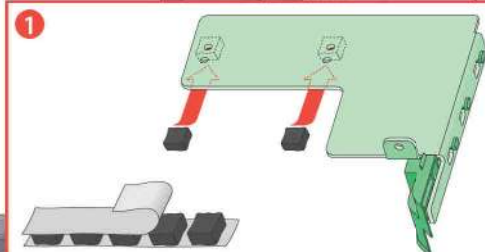
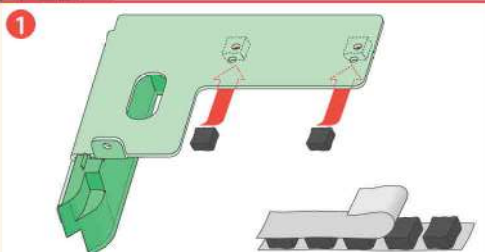
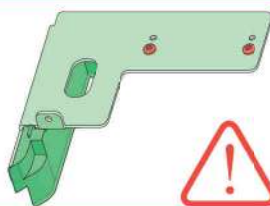
22495L0

22495A0

FTS / FTP / FPP / FPP MAX  
FYP / FTP MAX



PTP / PPP / PPP MAX  
PYP



5 type C

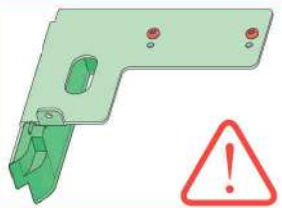
22495L0

22494L0

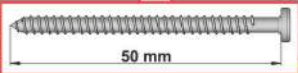
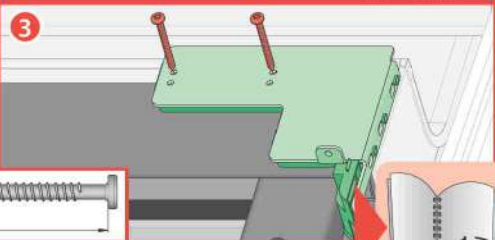
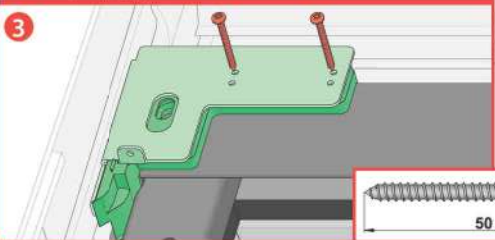
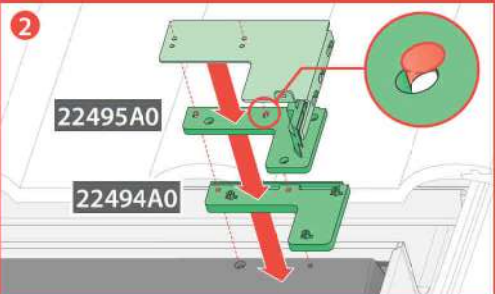
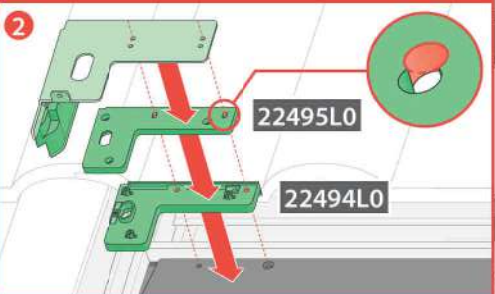
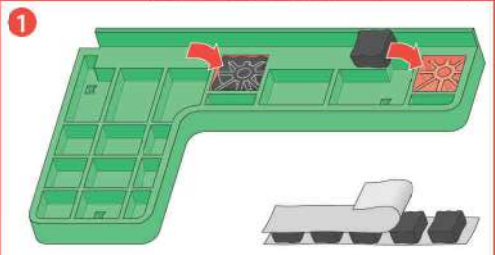
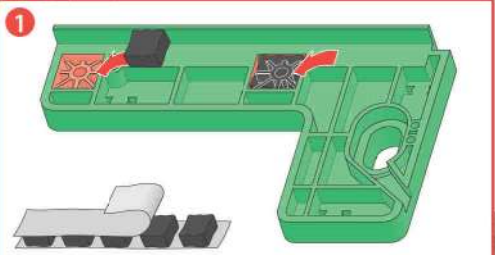
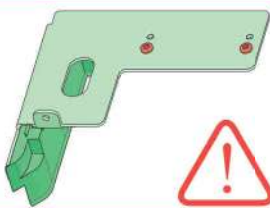
22495A0

22494A0

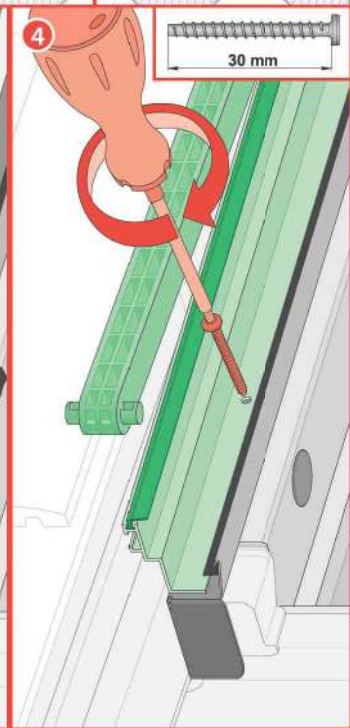
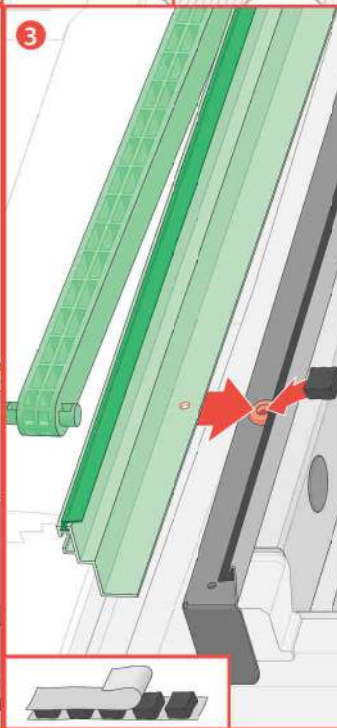
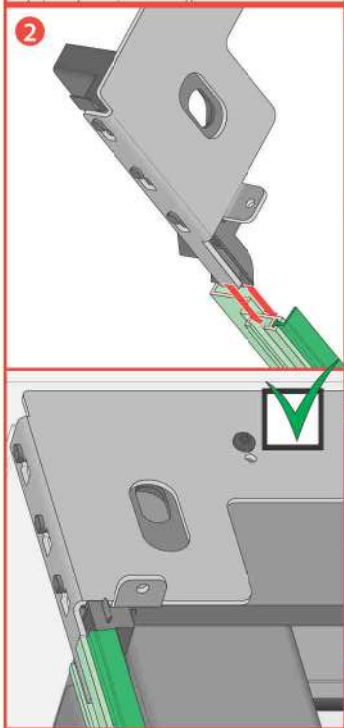
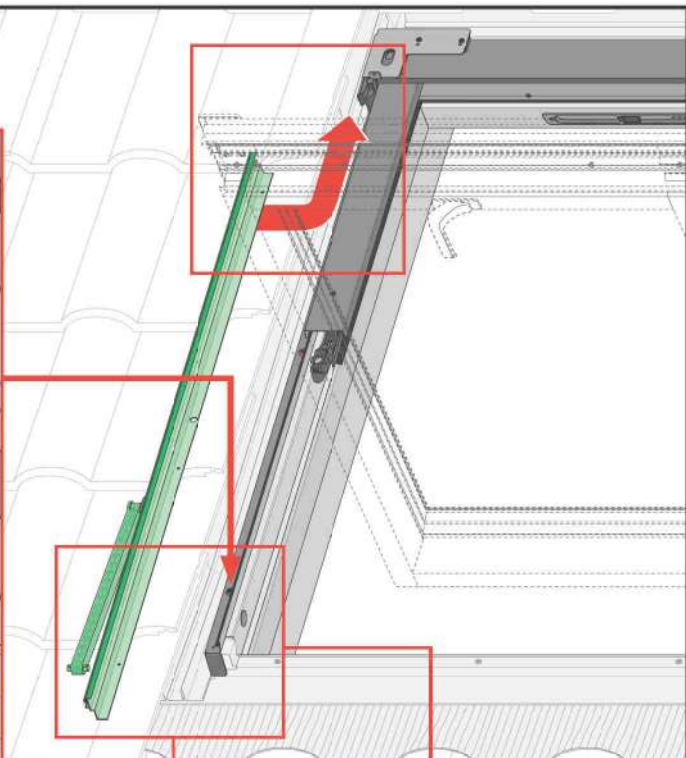
FTS / FTP / FPP / FPP MAX  
FYP / FTP MAX

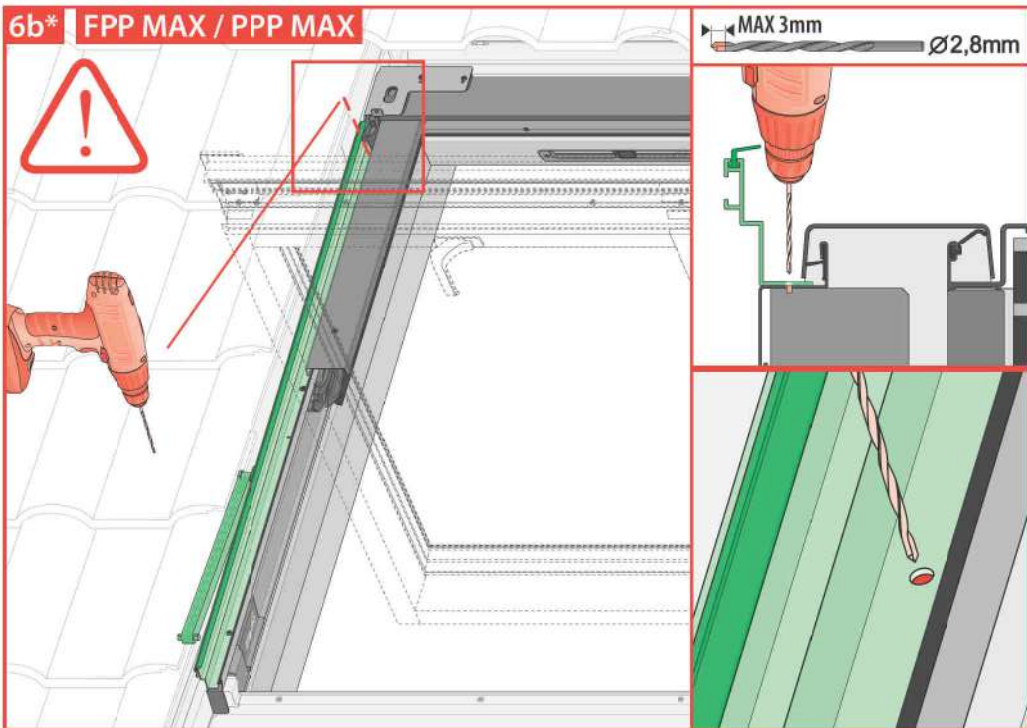
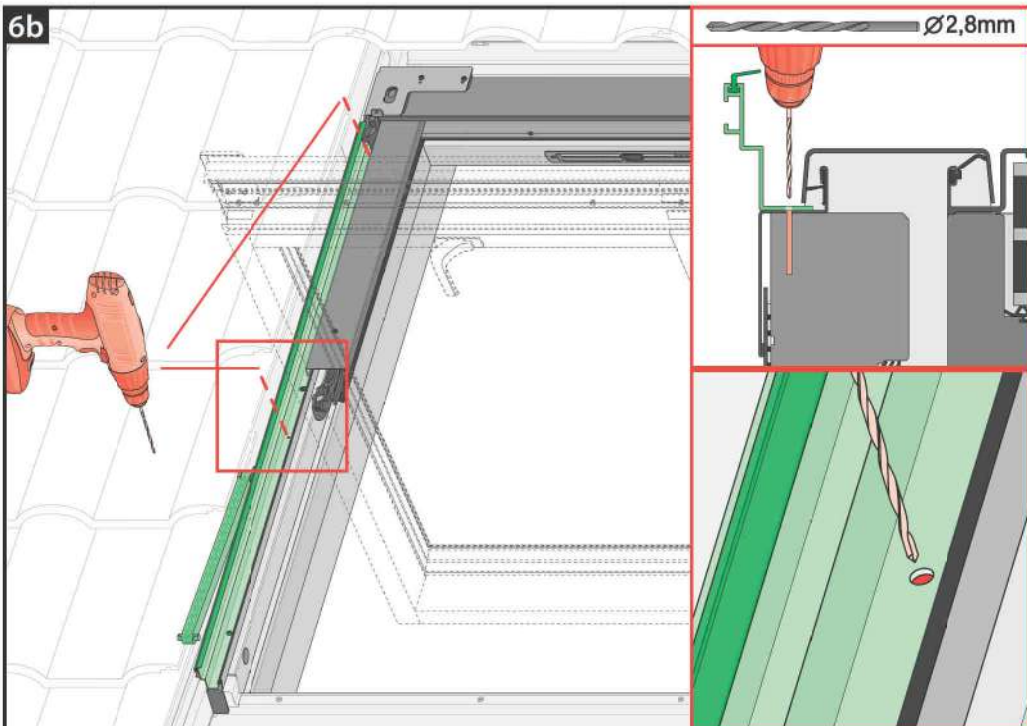


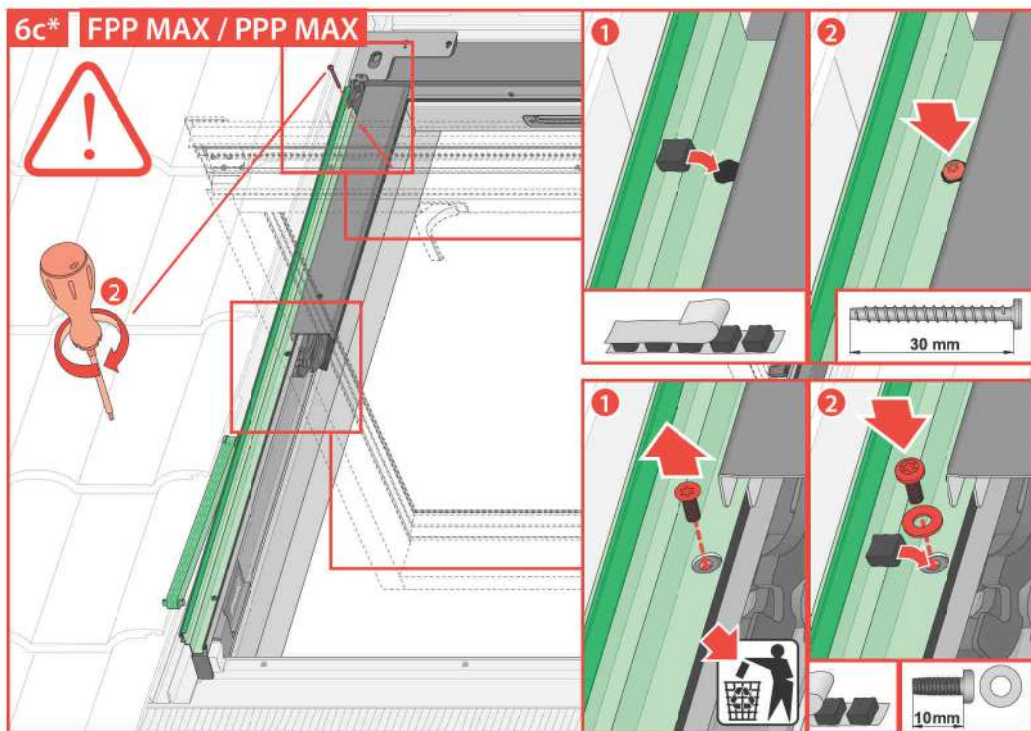
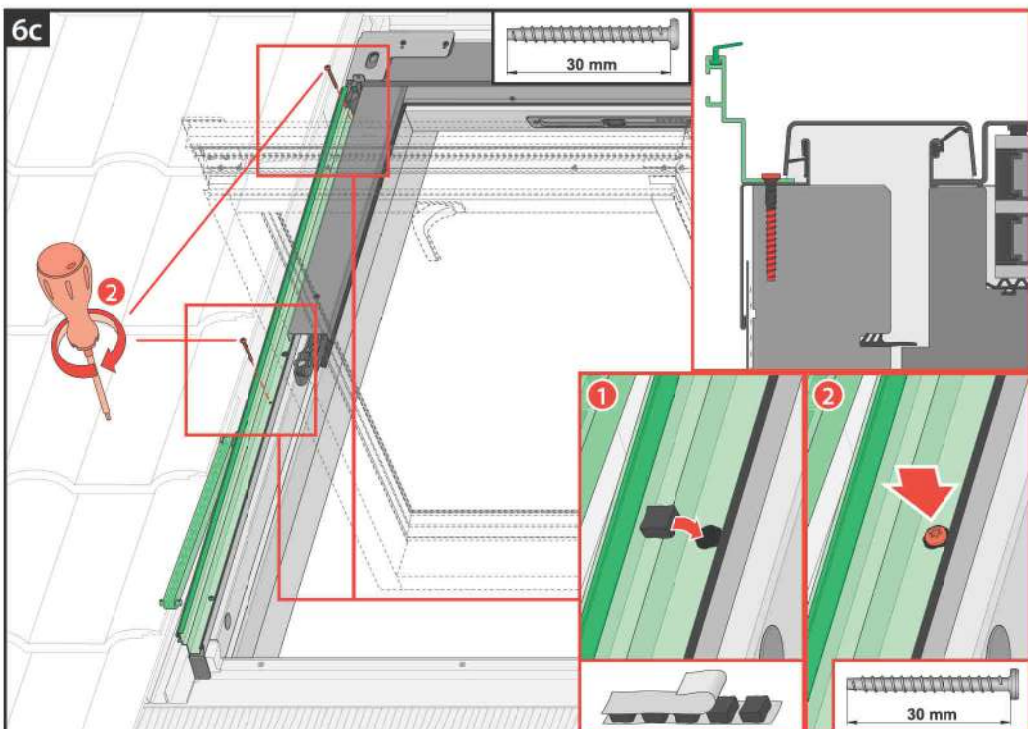
PTP / PPP / PPP MAX  
PYP

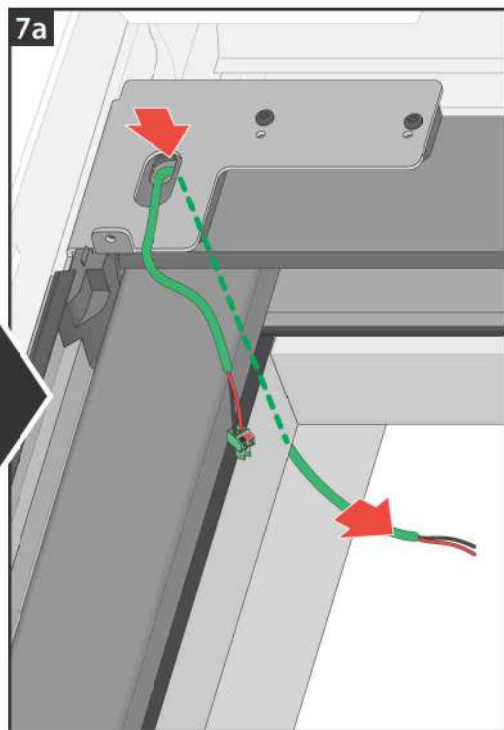
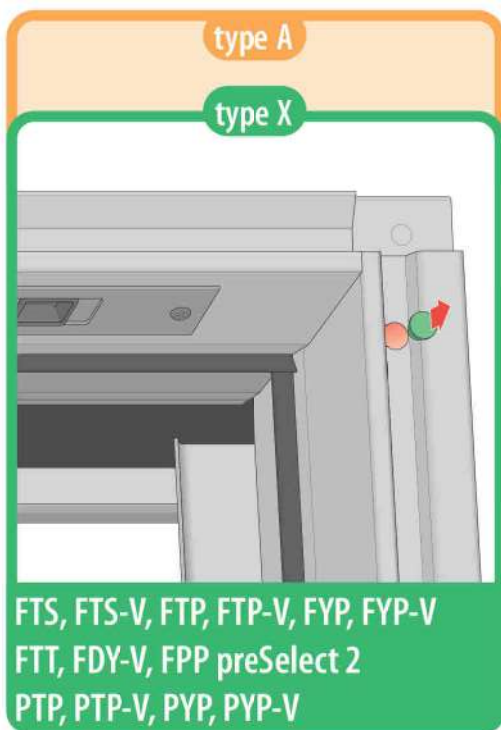
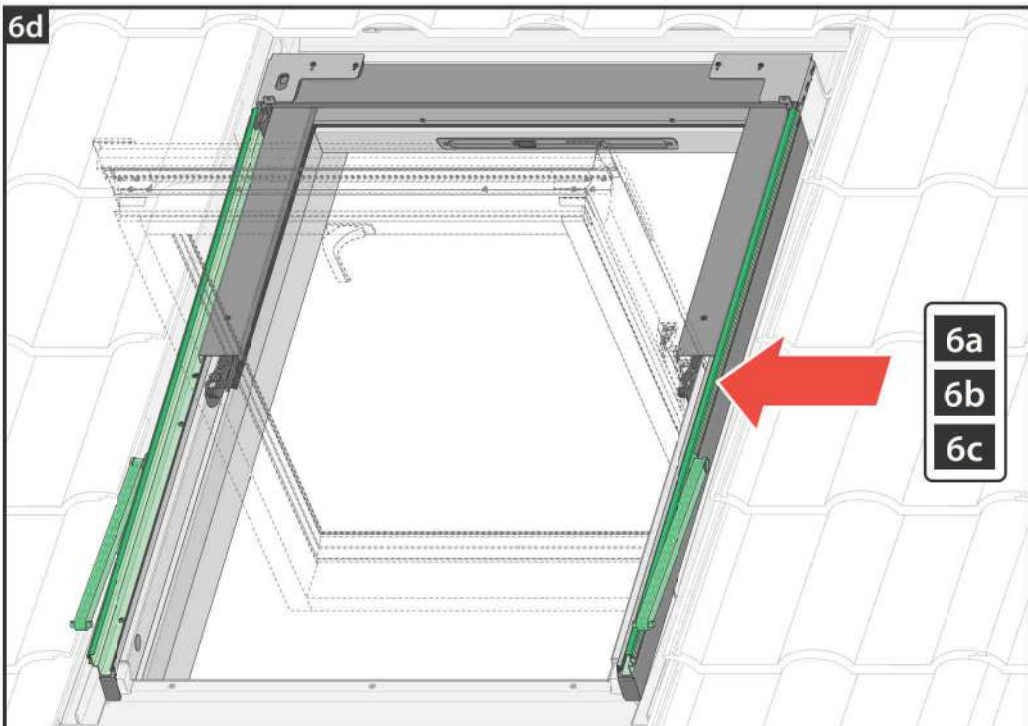


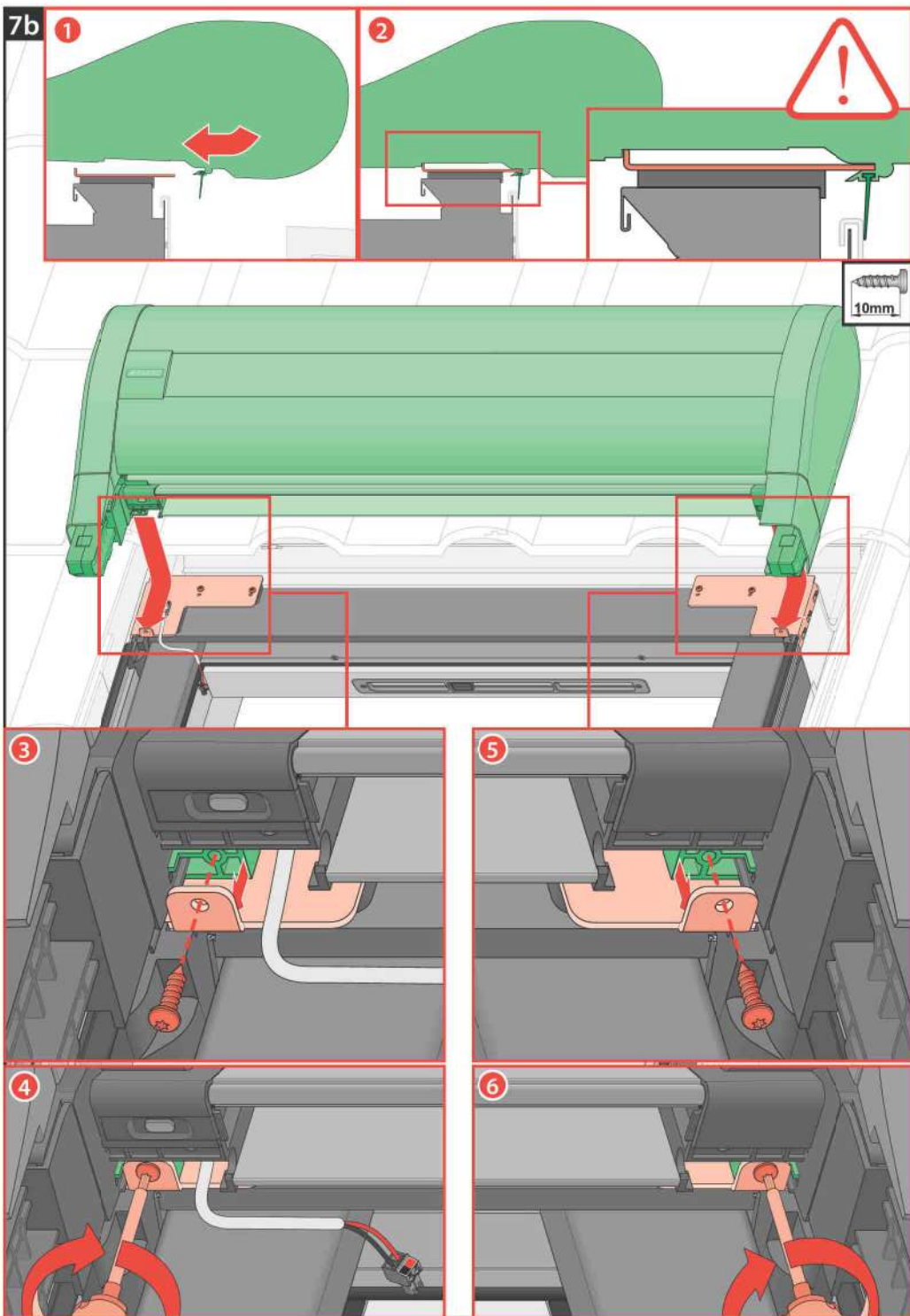
6a



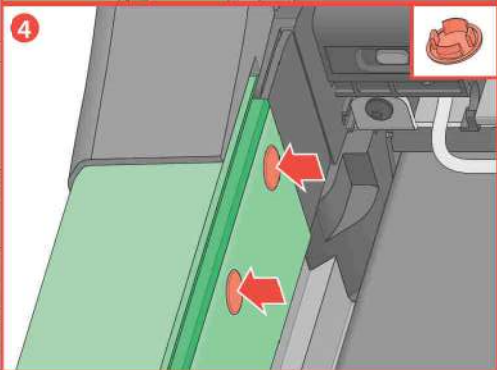
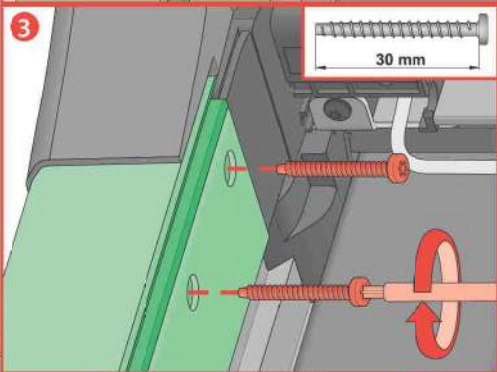
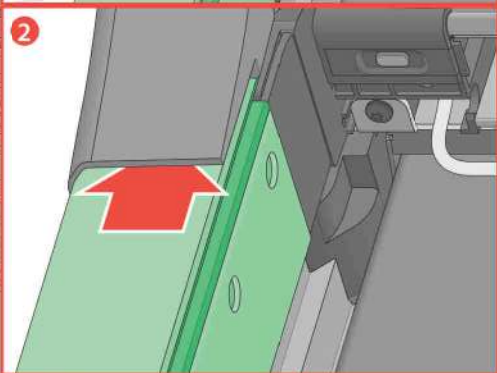
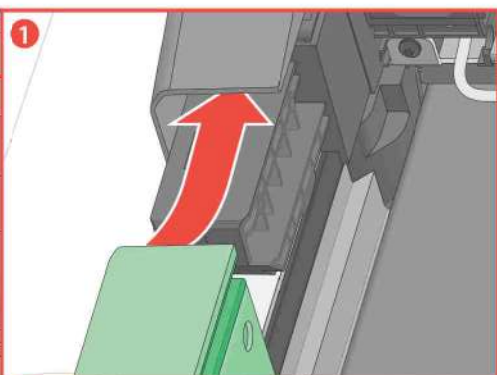
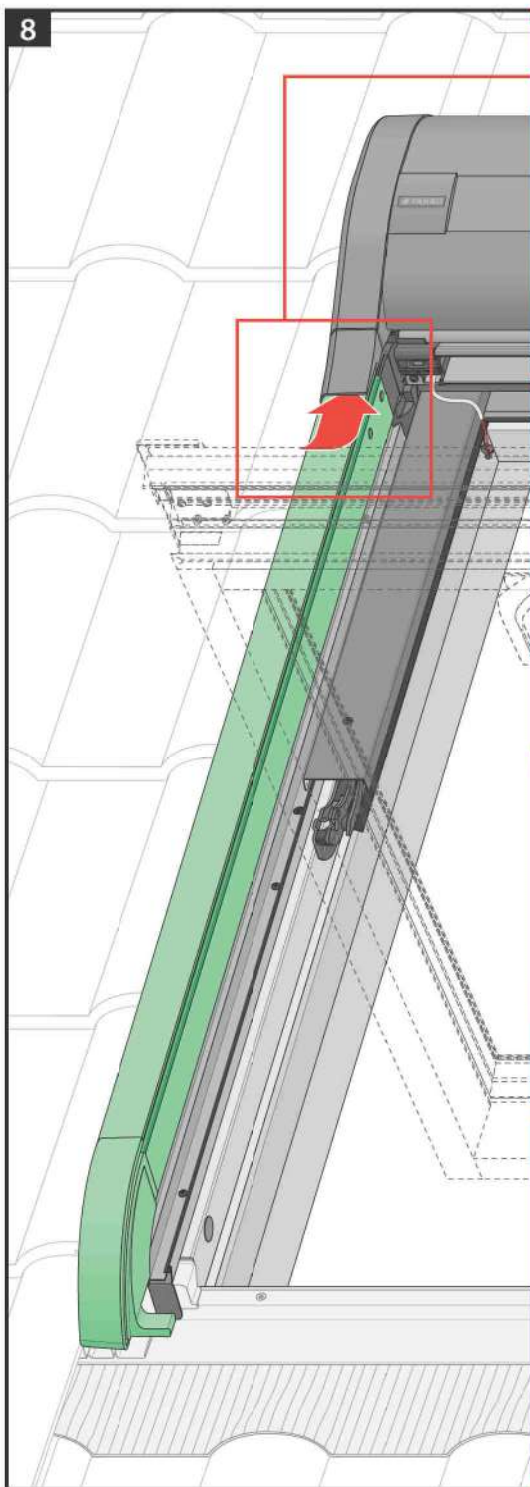




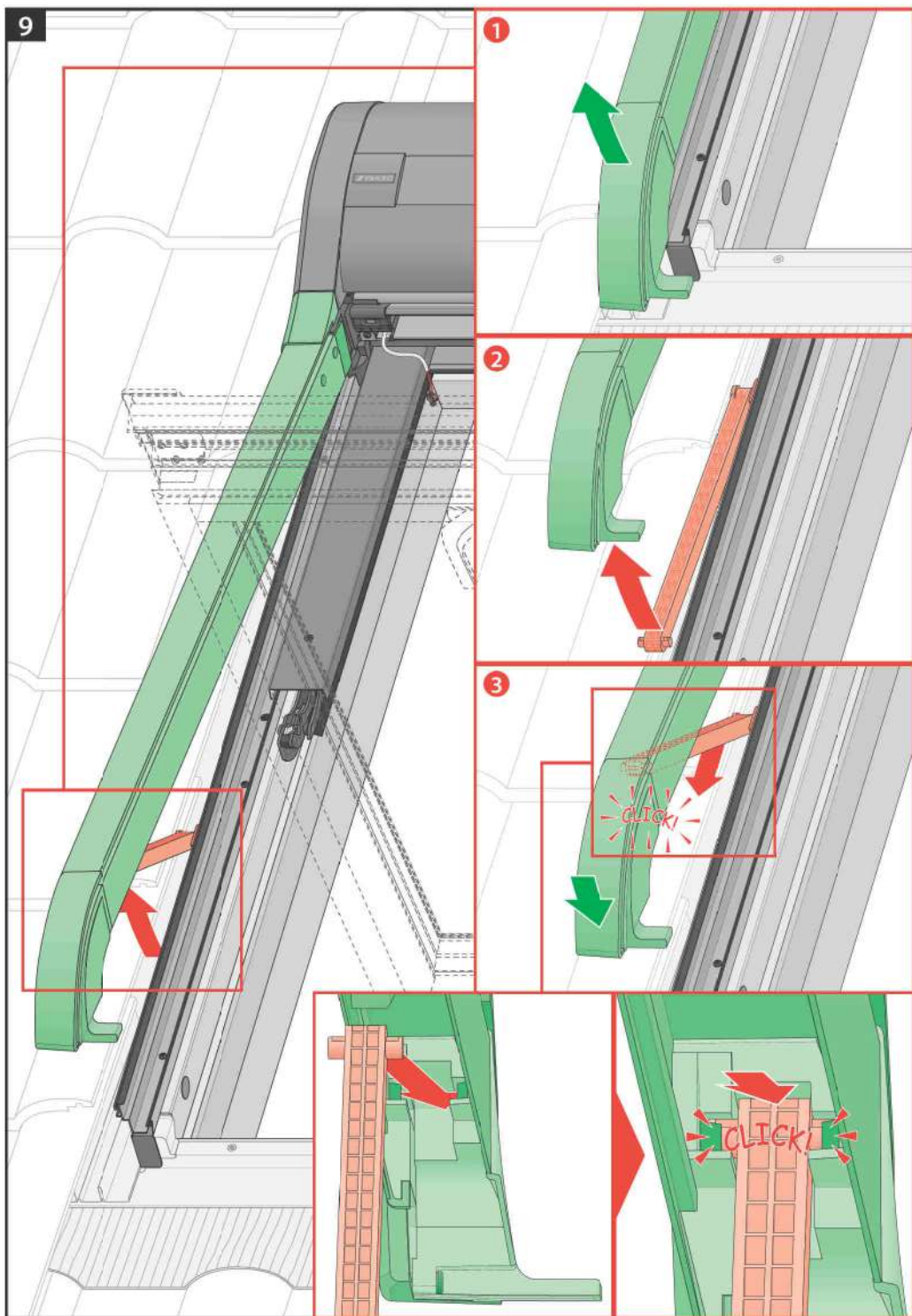




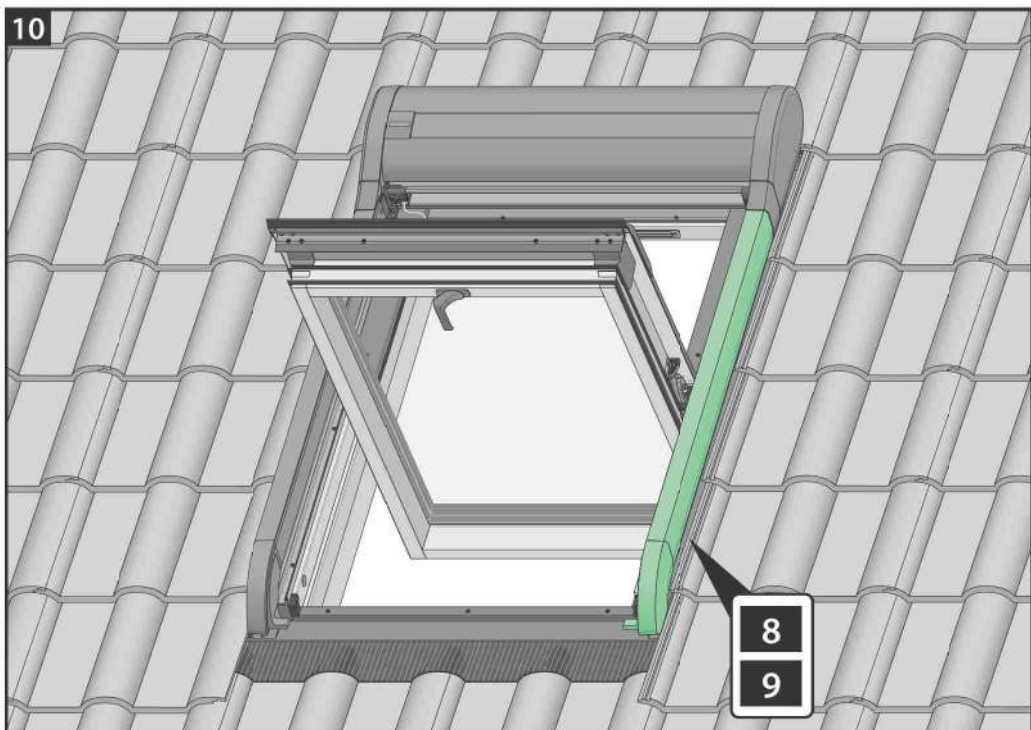
8



9

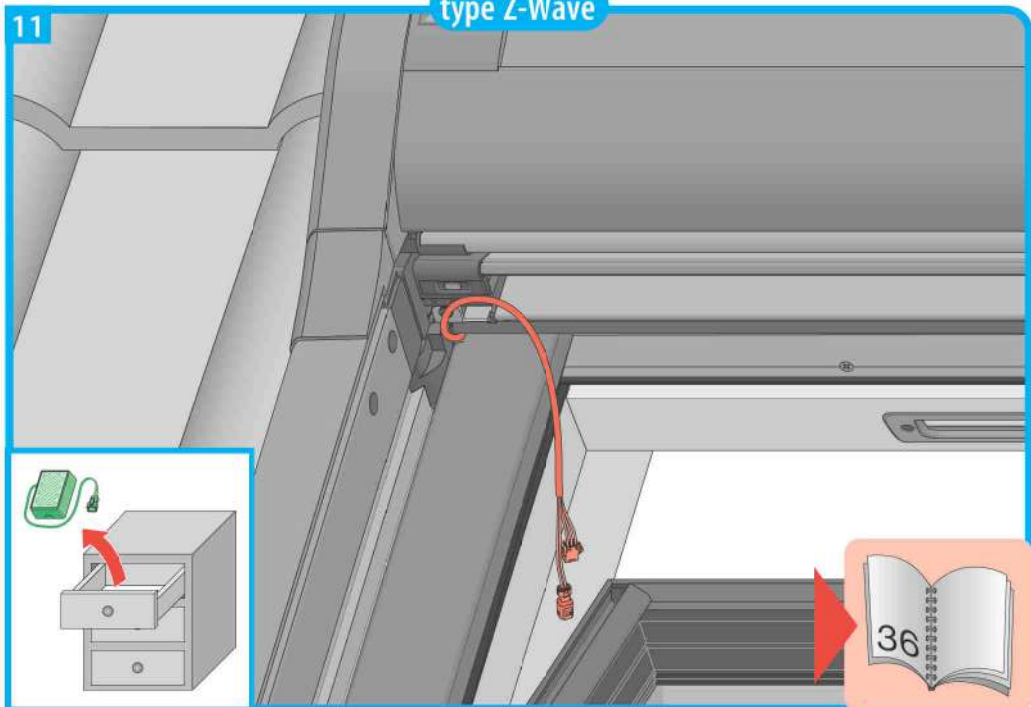


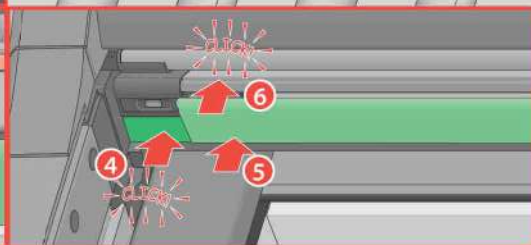
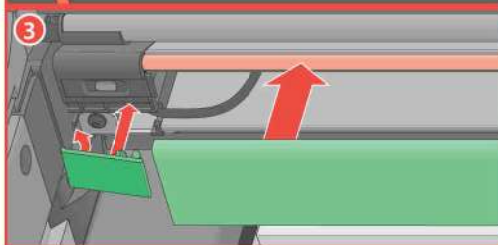
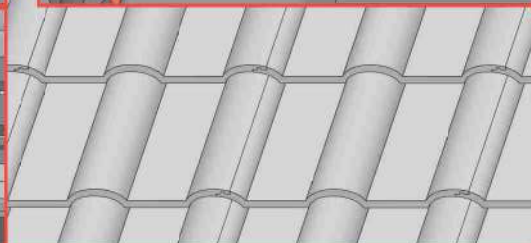
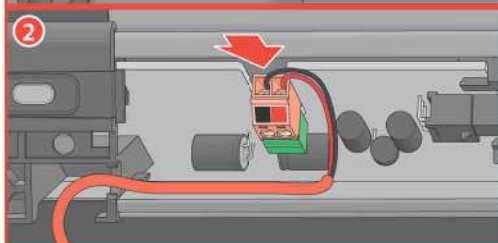
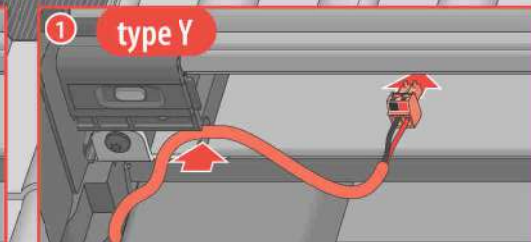
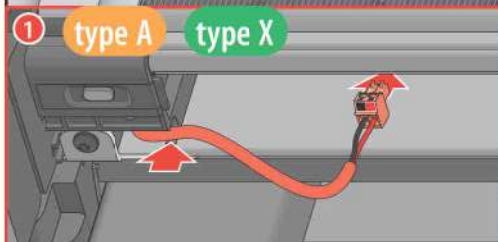
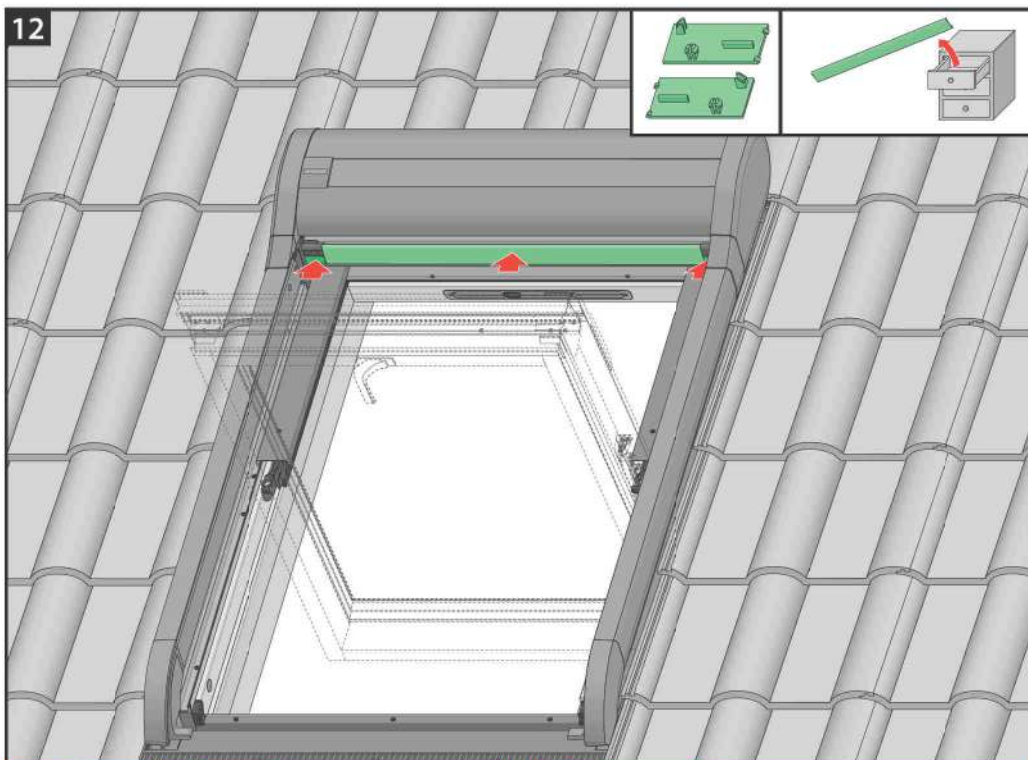
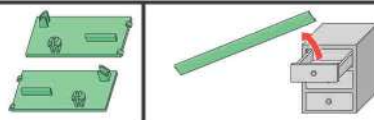
10



type Z-Wave

11

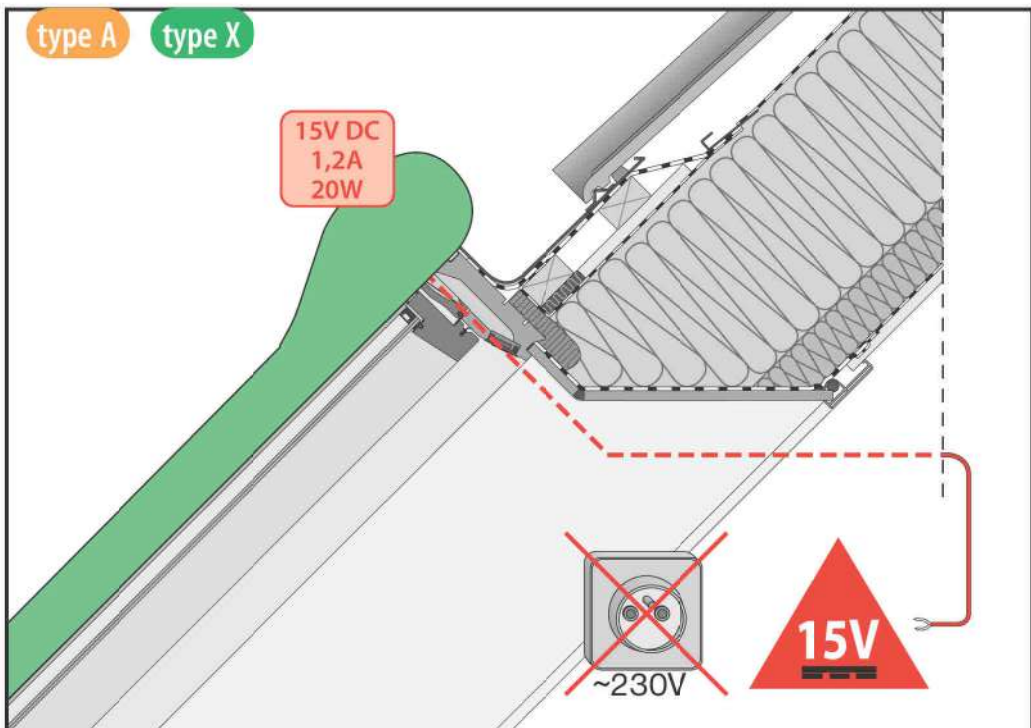




type A

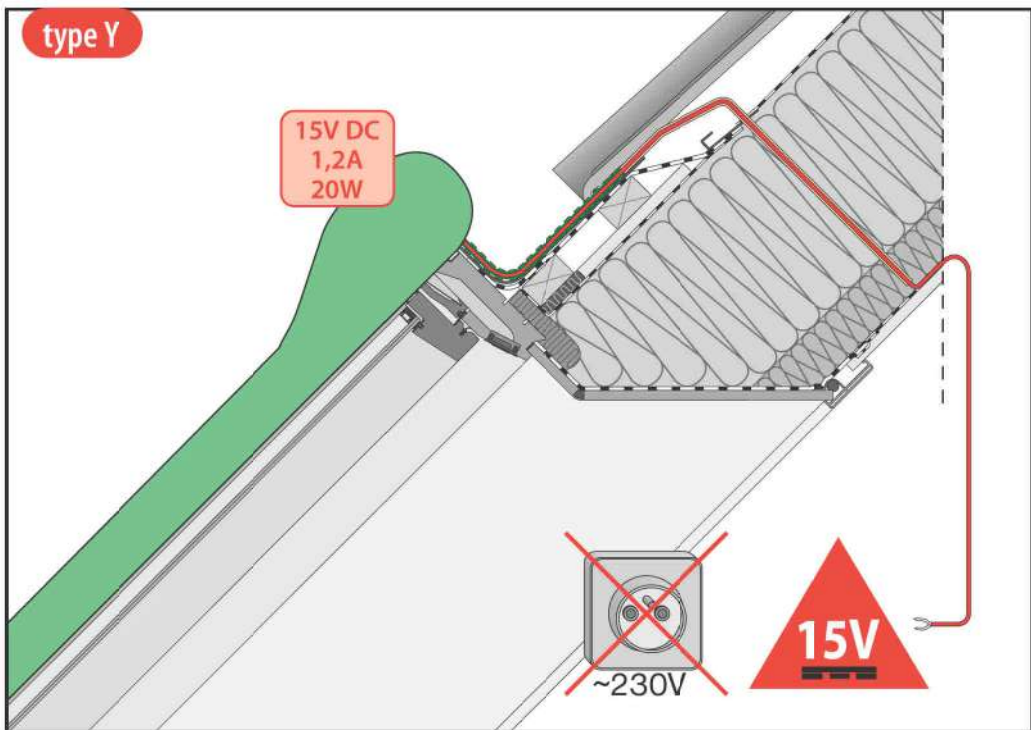
type X

15V DC  
1,2A  
20W

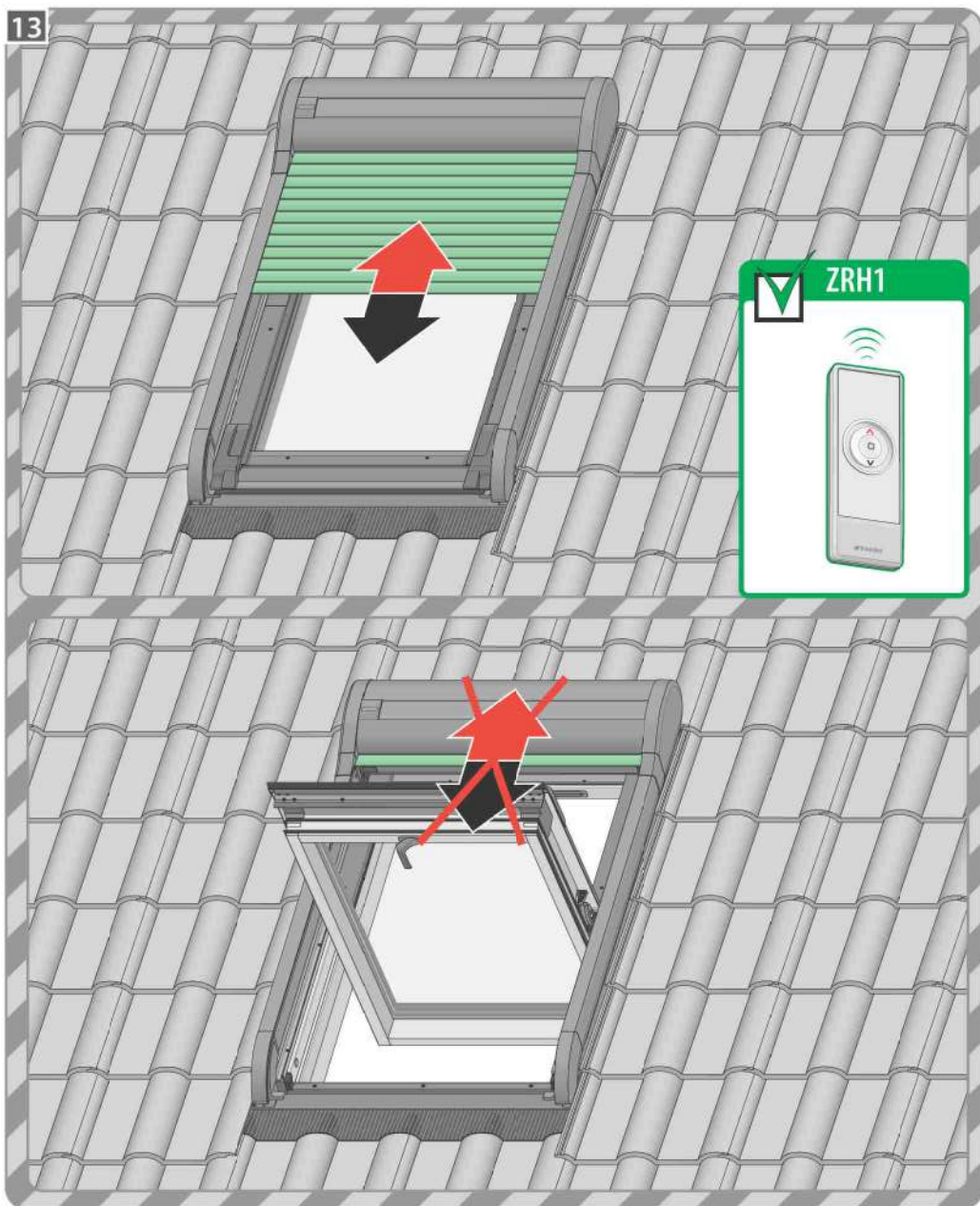


type Y

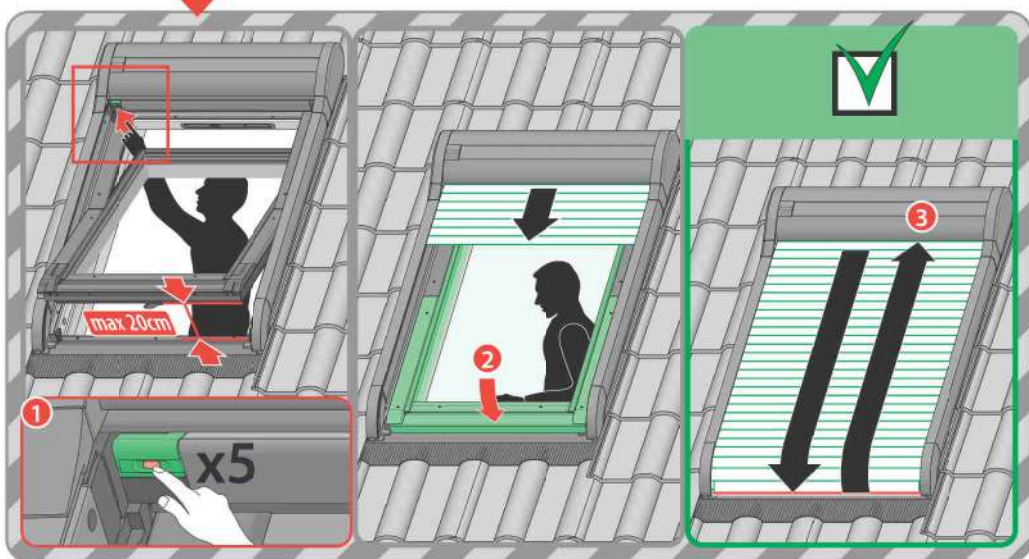
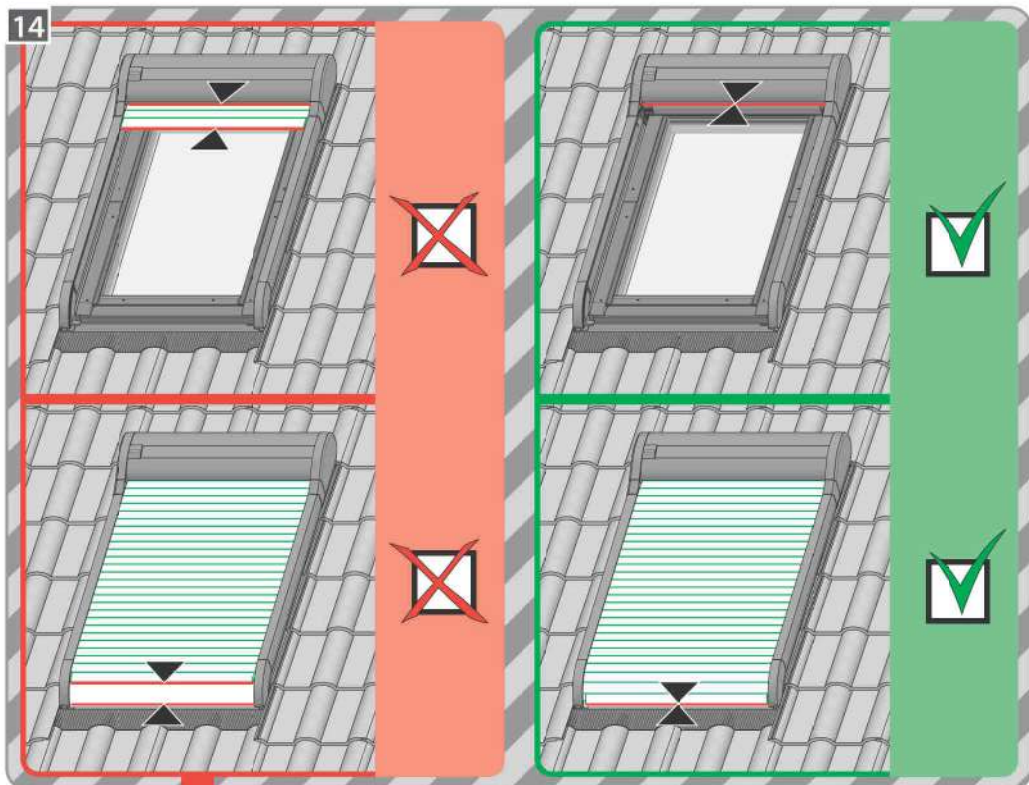
15V DC  
1,2A  
20W

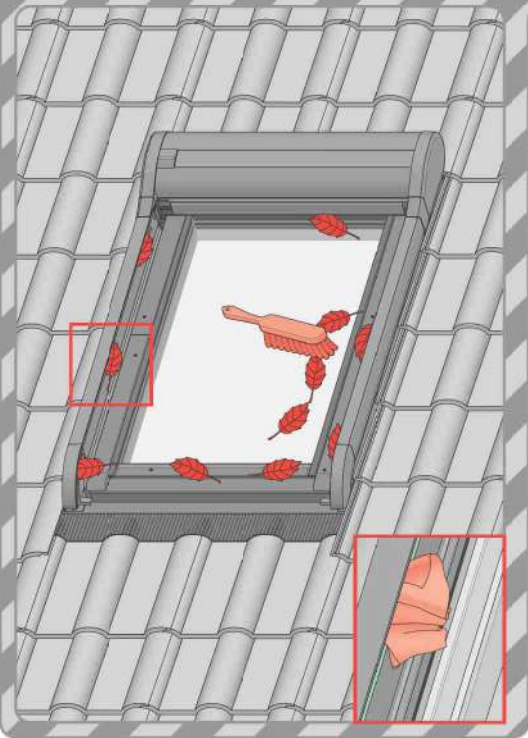
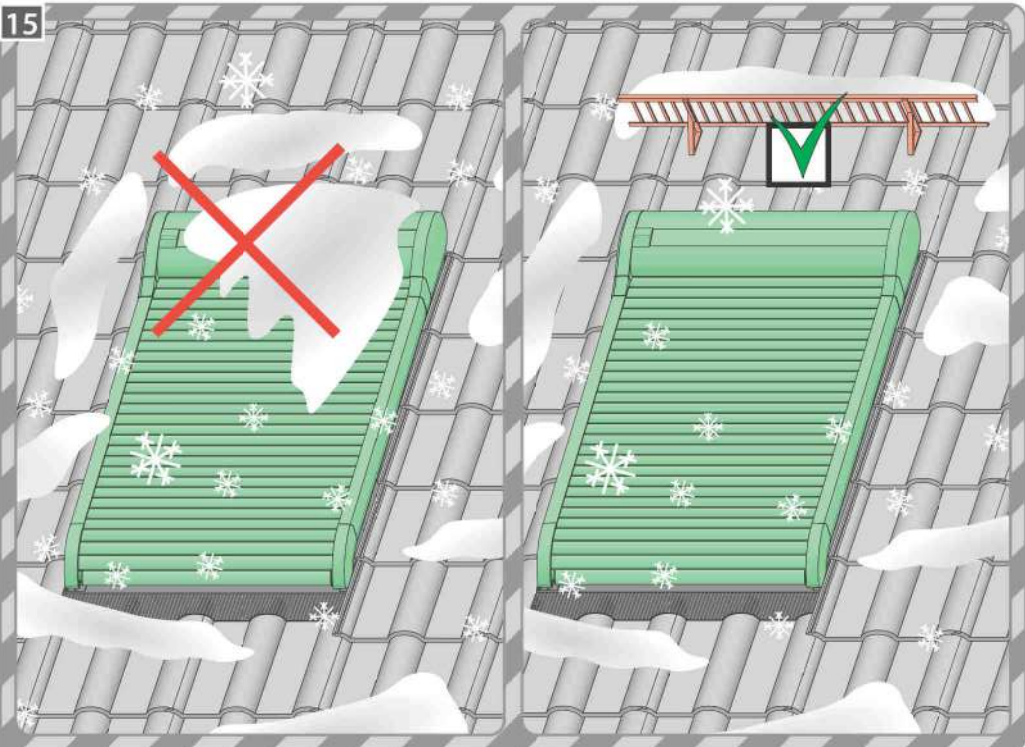


13



14

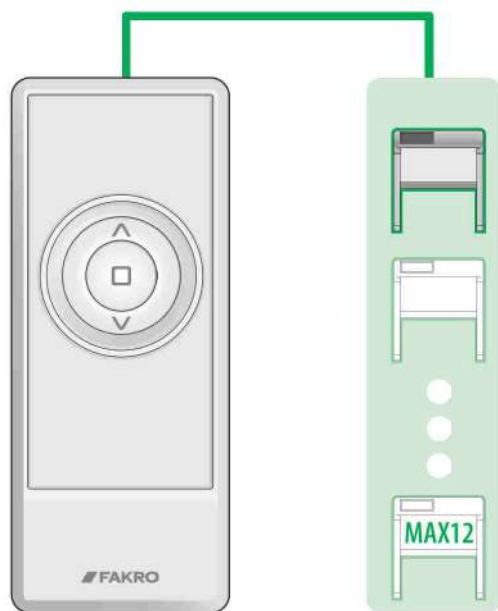




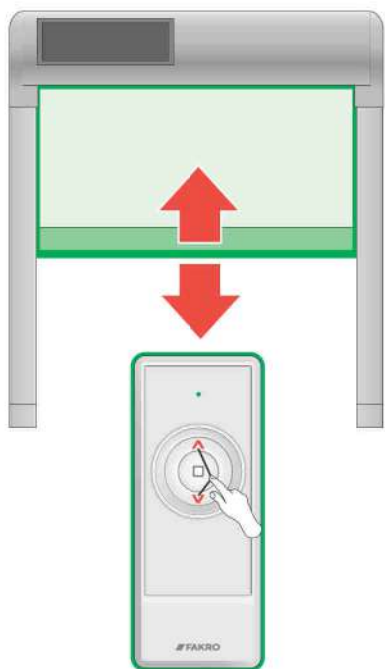
1



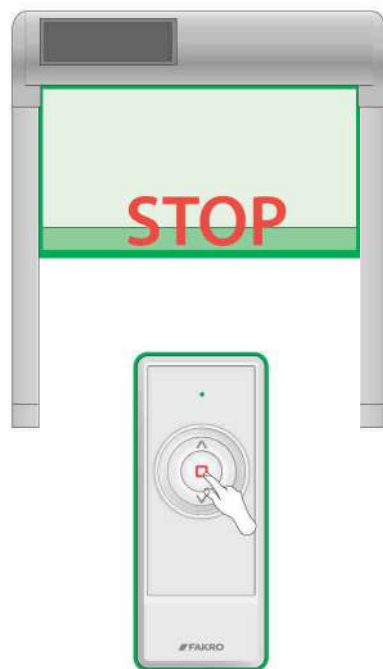
2a



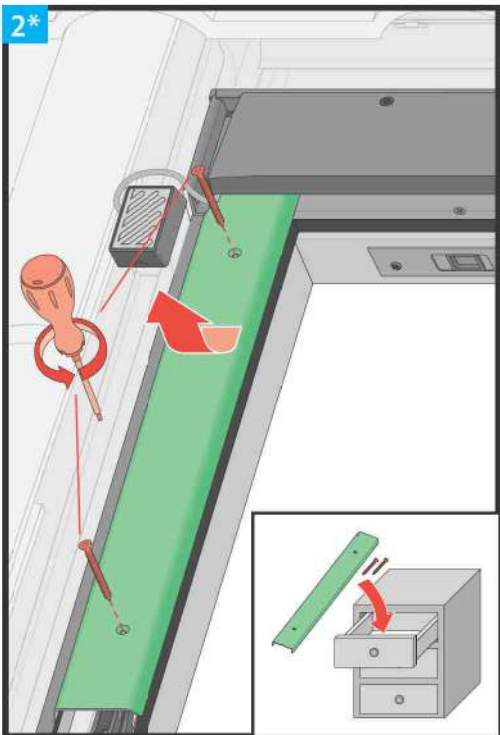
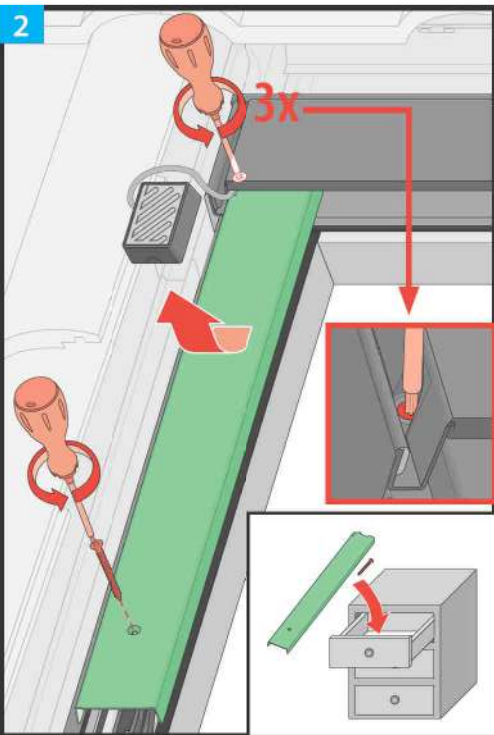
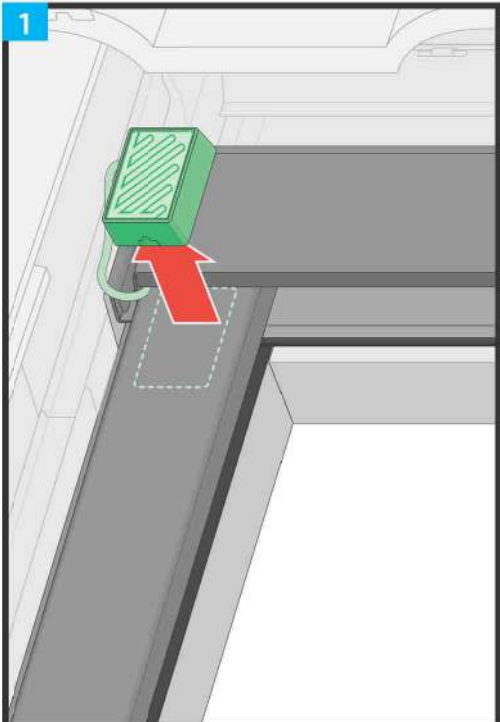
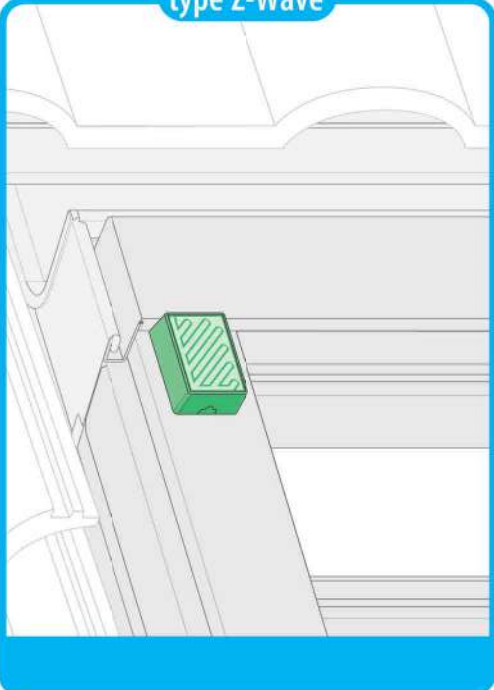
2b

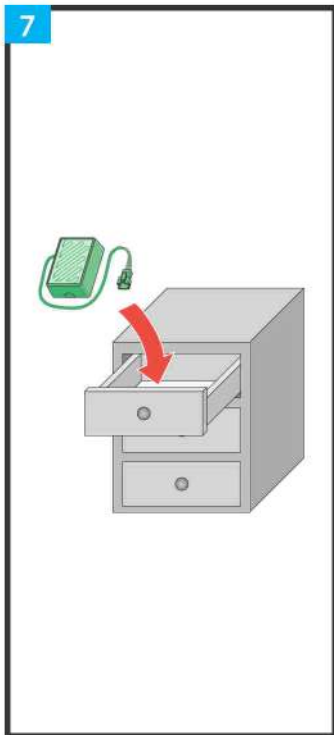
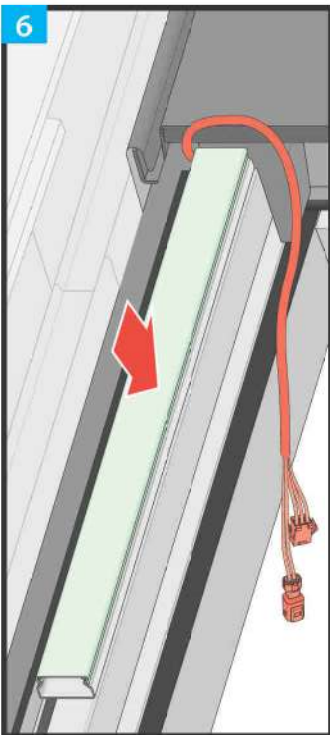
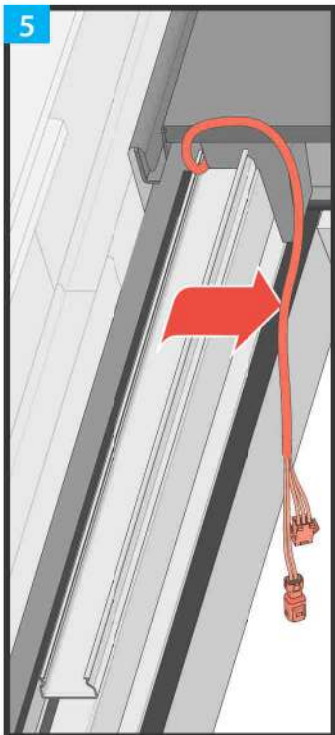
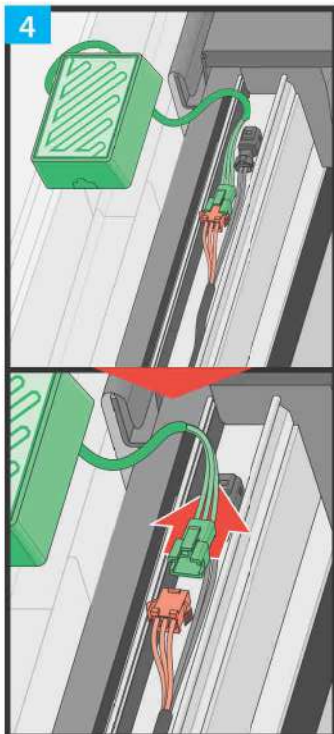
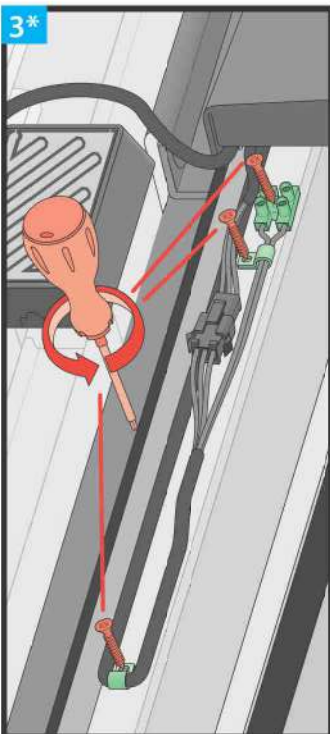
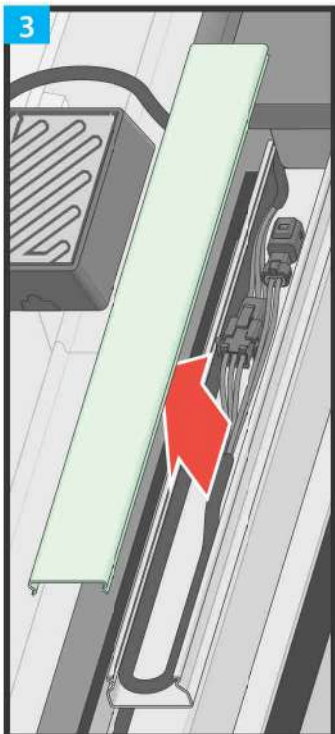


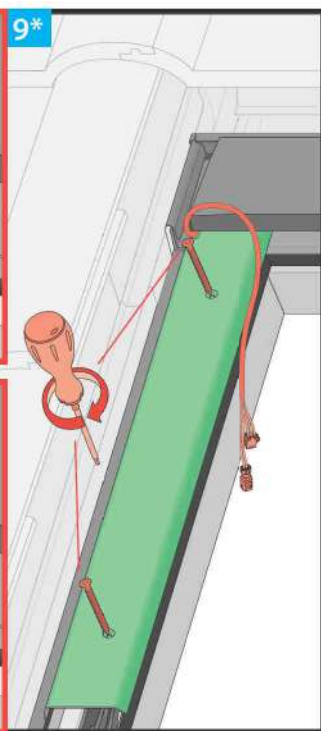
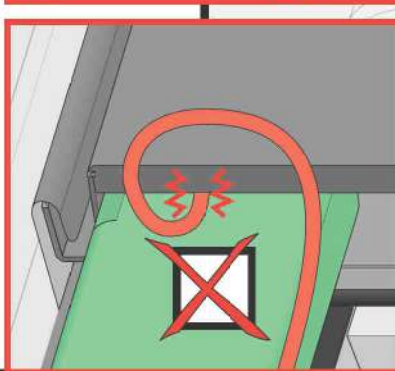
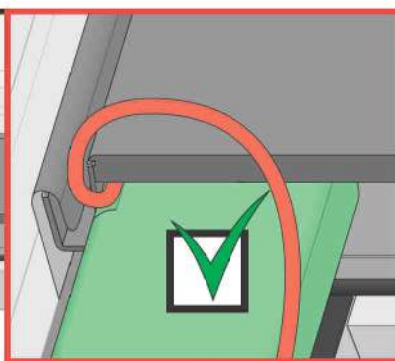
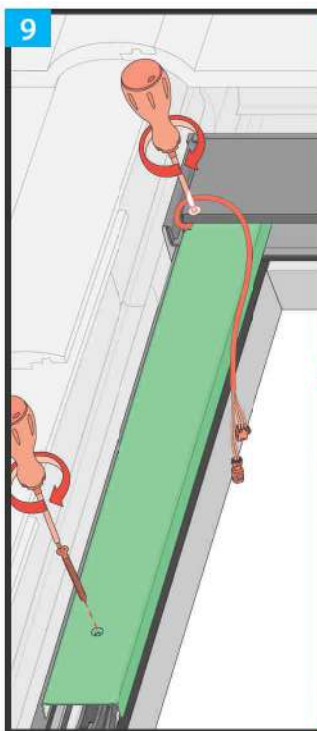
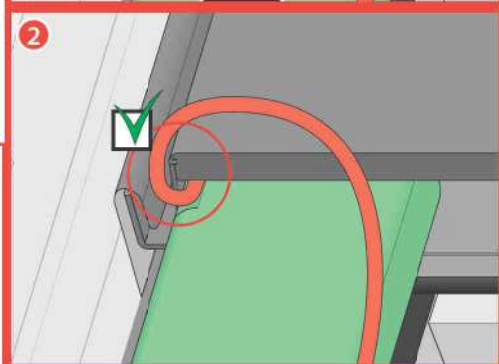
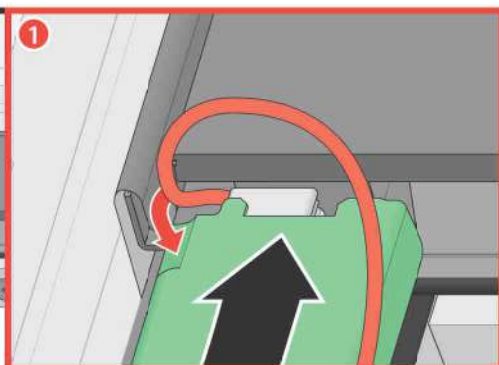
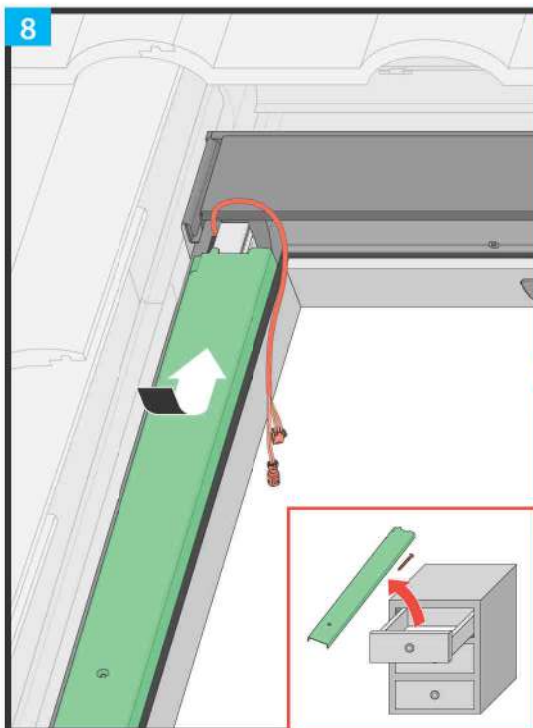
2c



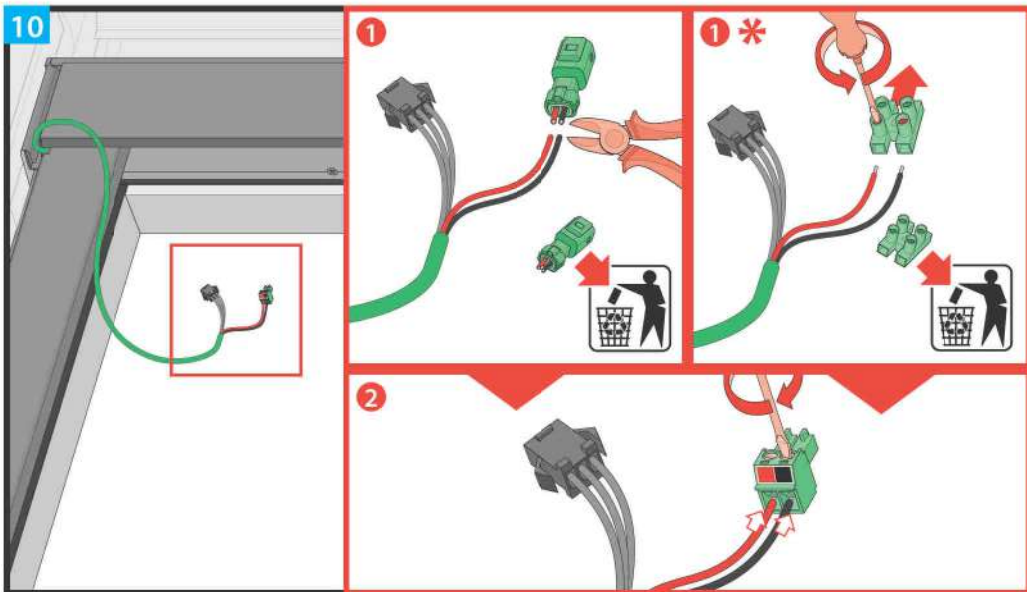
type Z-Wave



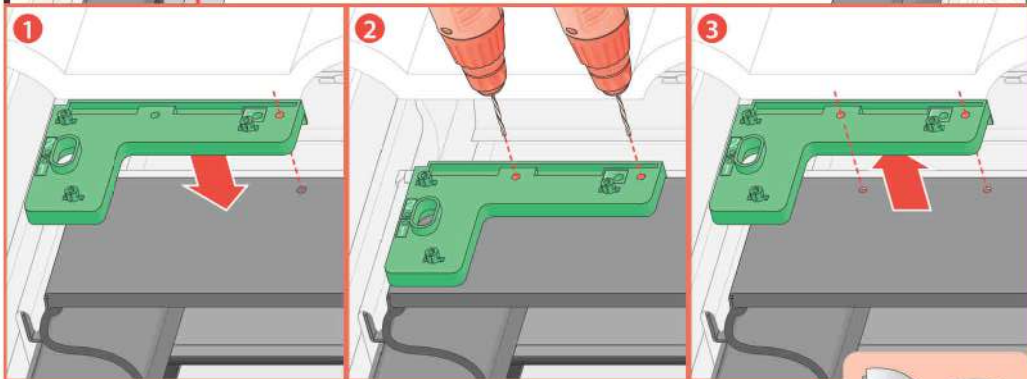
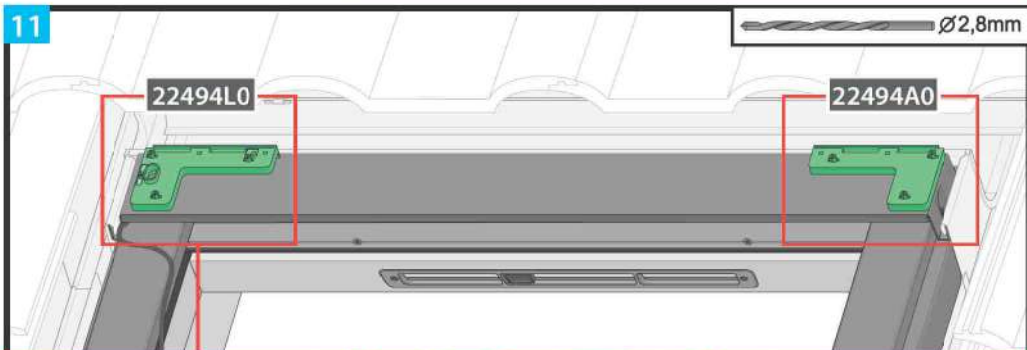


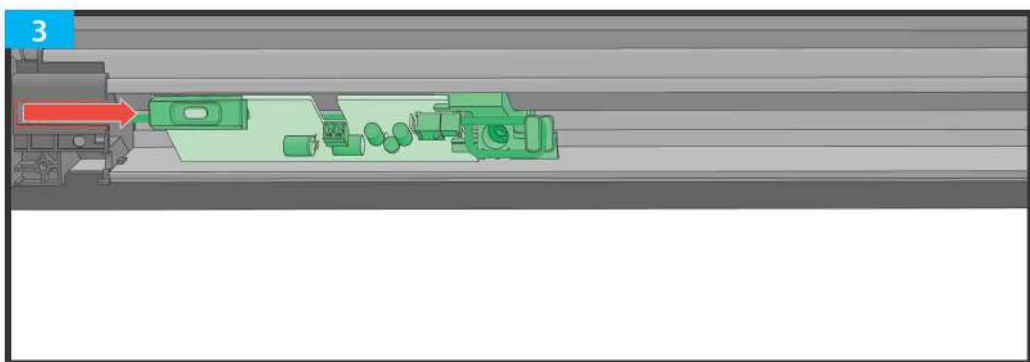
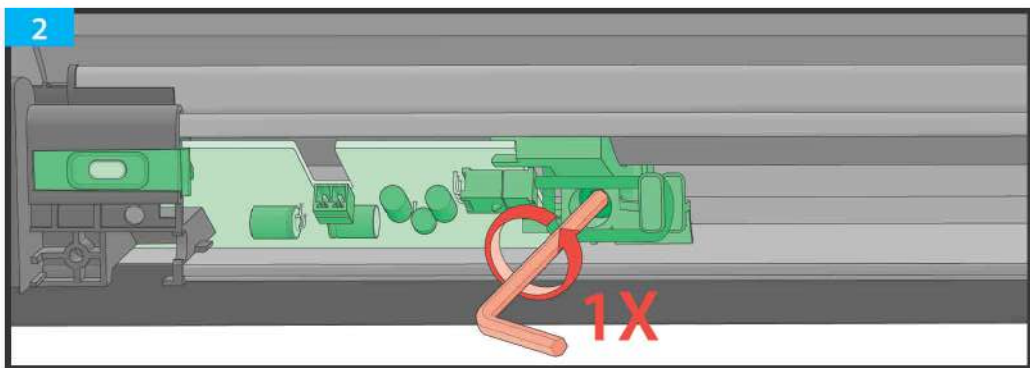
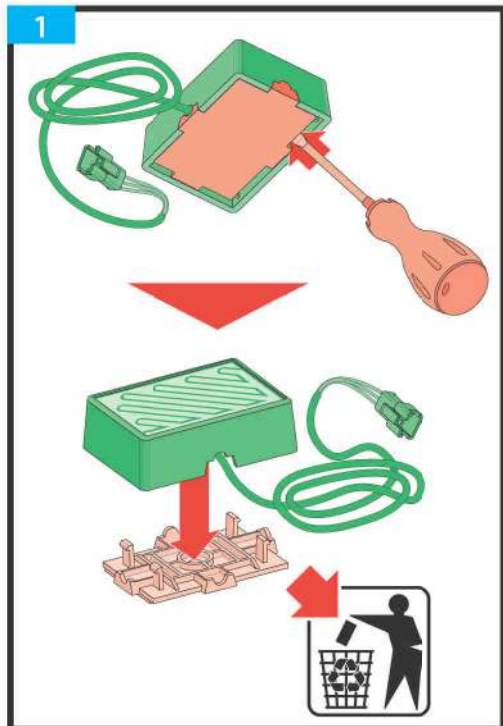
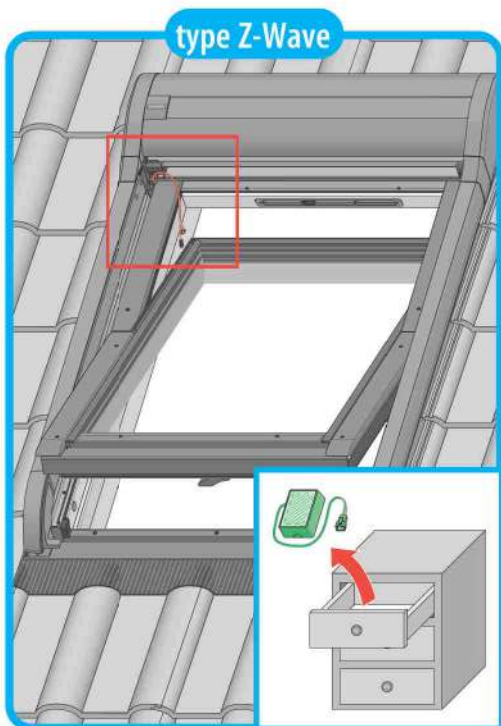


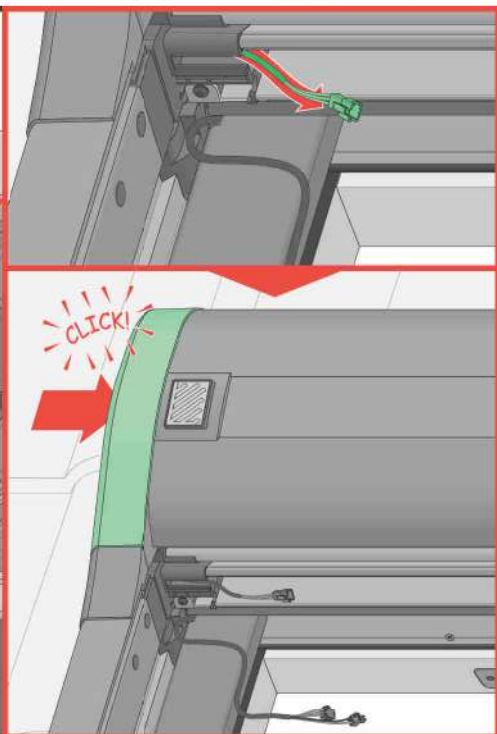
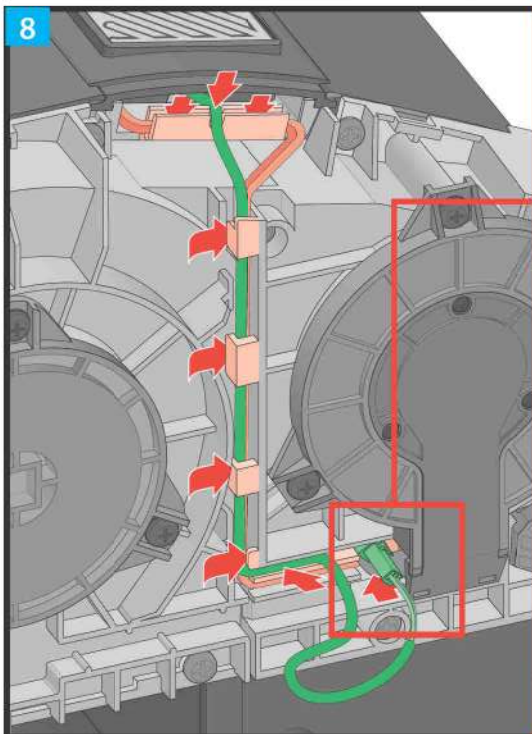
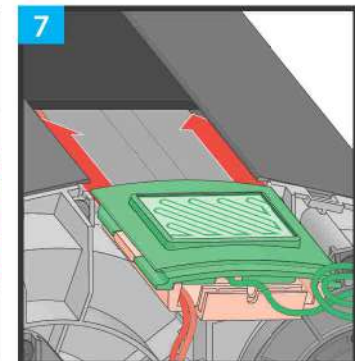
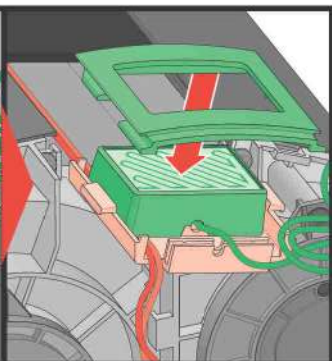
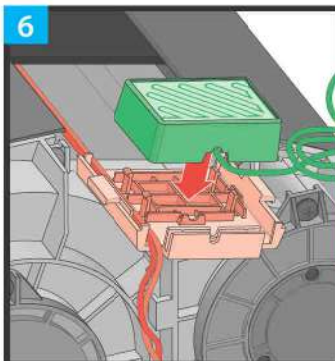
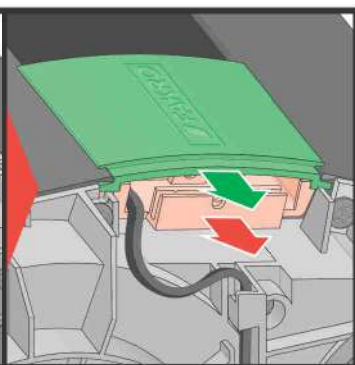
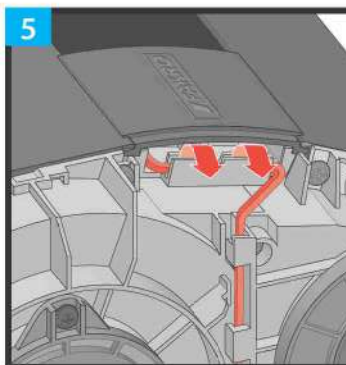
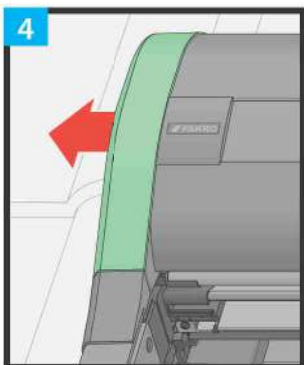
10

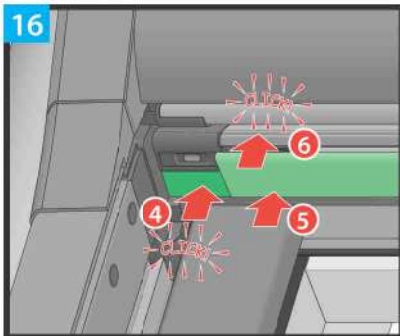
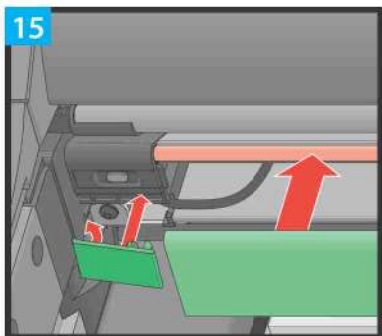
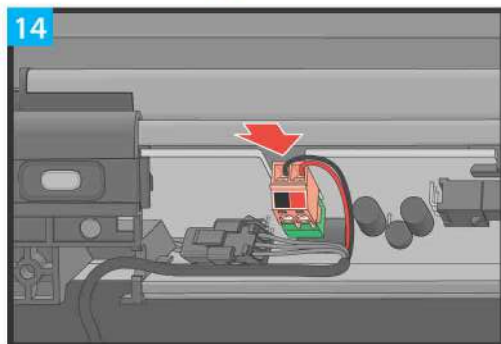
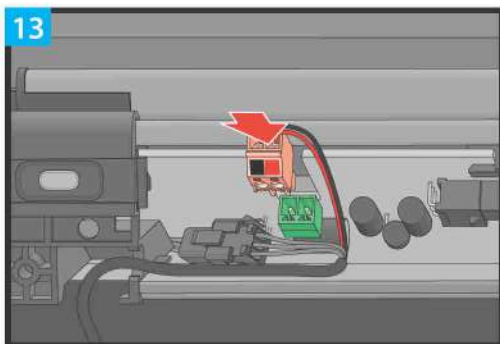
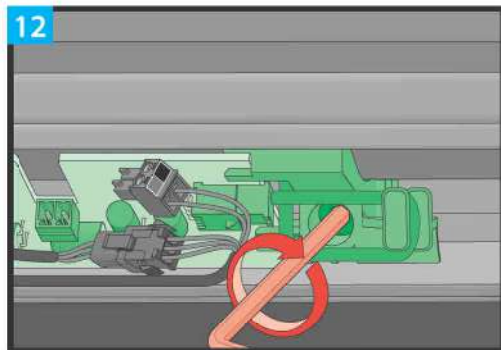
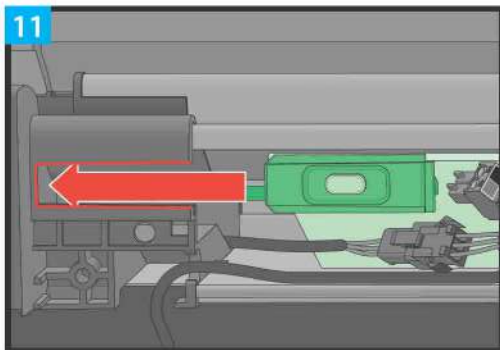
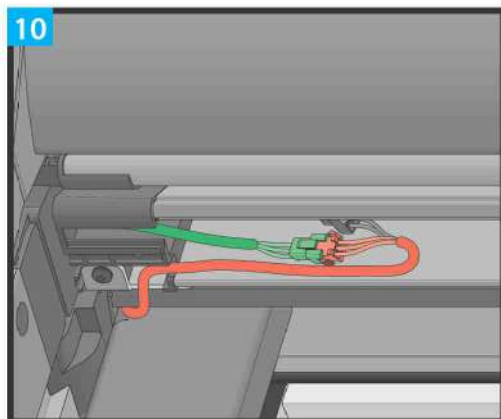
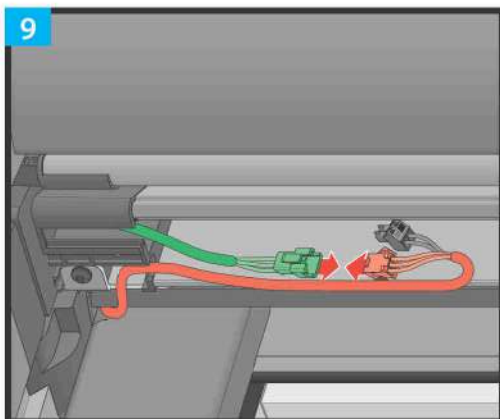


11



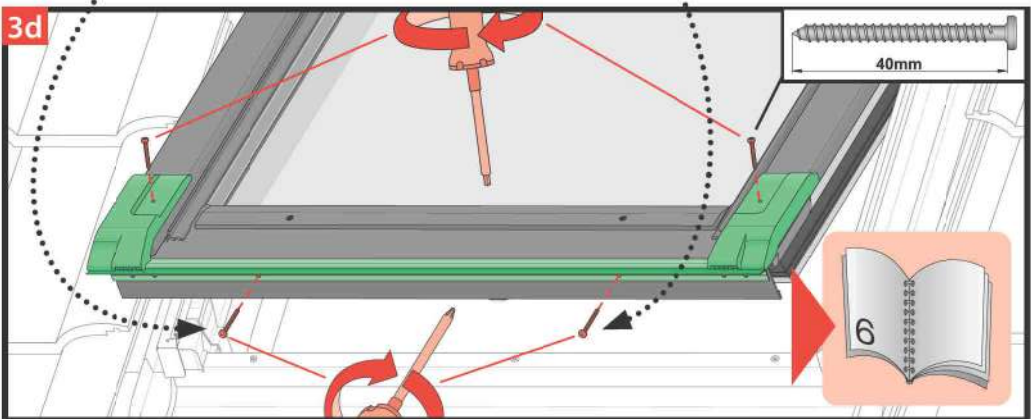
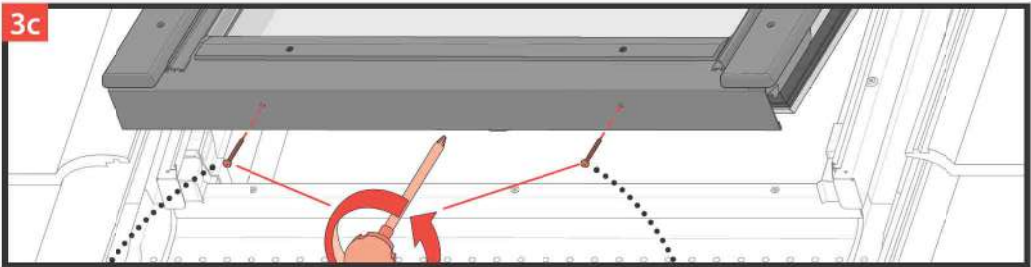
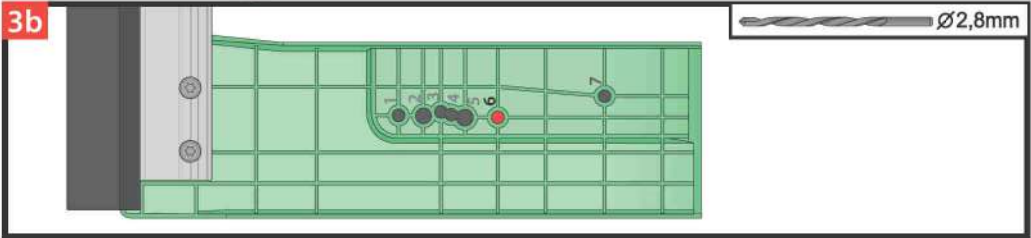
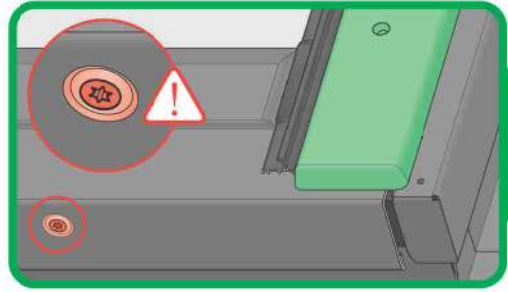
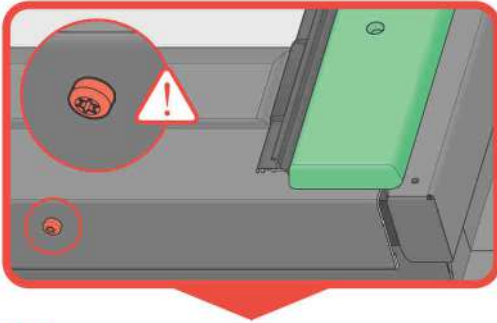


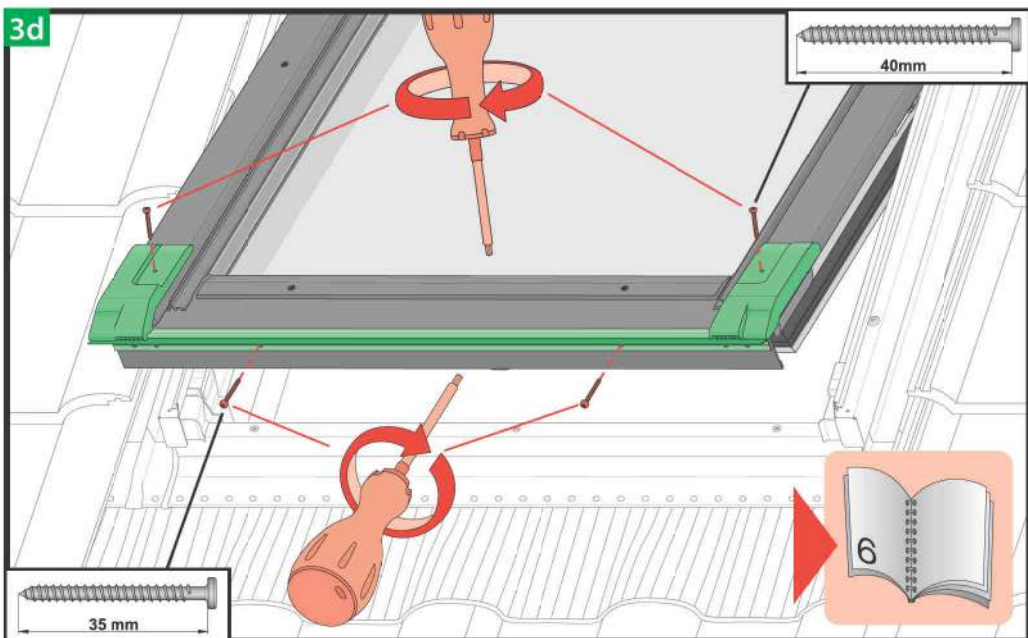
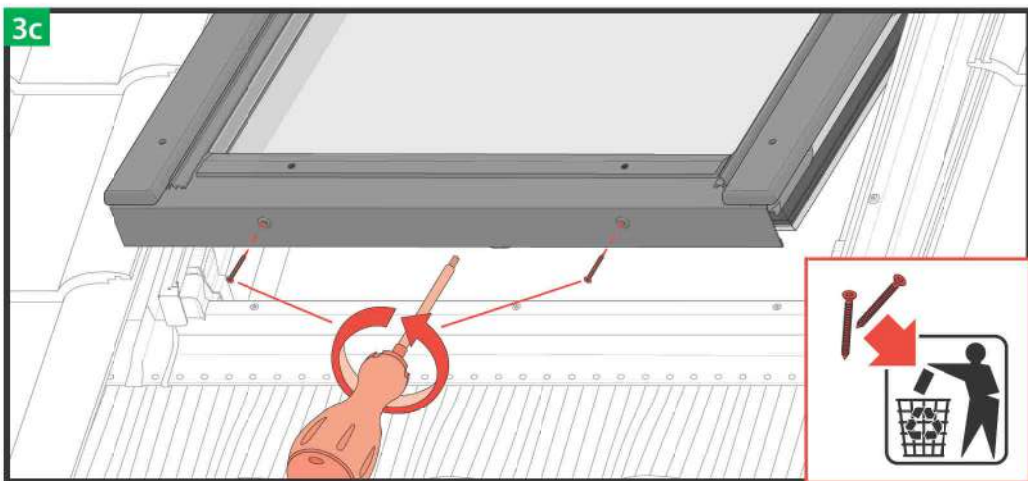
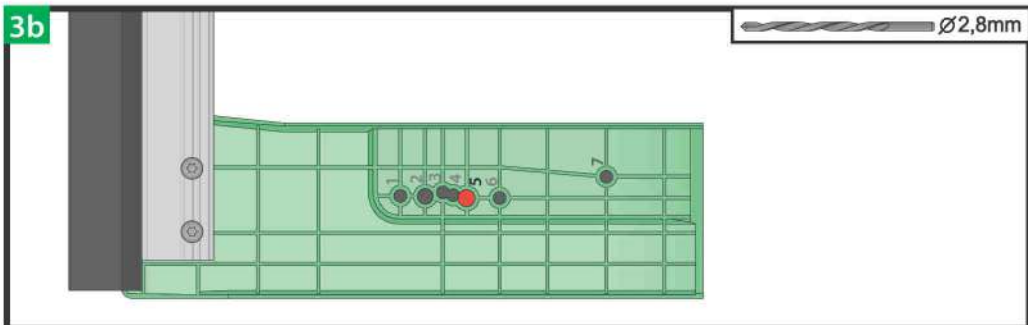






FTT





5

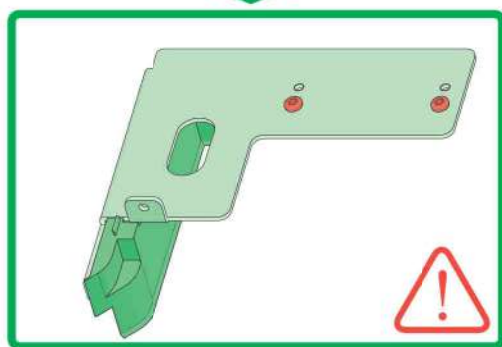
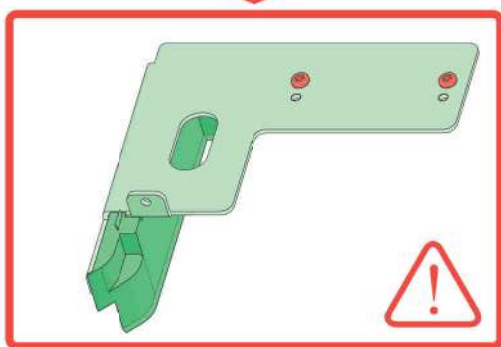
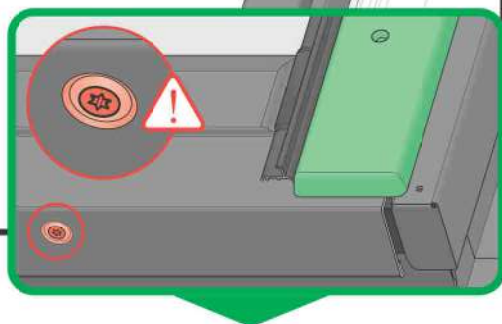
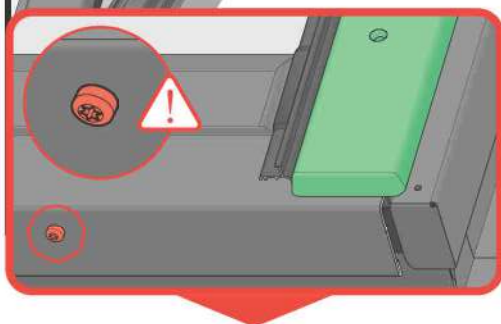
FTT

22495L0

22494L0

22495A0

22494A0





<b>EN</b>	Before installation, it is compulsory to read the NC91V „ORIGINAL INSTRUCTIONS 2/3 Installation and user manual”.
1	Remove the cover strip from the battery compartment.
2	Open the window.
3a	Remove screws positioned in the bottom part of the window sash.
3b	Make a hole in the bottom holder of the shutter in the place depending on the window type.
3c	Install the assembly unit holder.
3d	Screw the profile to the window sash having previously drilled the holes.
4, 4a, 4b, 4c	Use mounting washers to make holes in the window hood.
5	Install the mounting plate unit by selecting elements depending on the cladding type.
6a, 6b, 6c, 6d	Install assembly profiles of the shutter.
7a	Place the power cable of the shutter to the hole in the window.
7b	Slide the shutter onto holders and fix it.
8	Slide the side guide rail into the shutter casing and fix it with two screws.
9	Connect the opening restrictor with the shutter guide rail.
10	Repeat steps 8-9 for the left guide rail.
11	In the case of electrically operated window perform additional operations.
12	Install covering elements in the shutter cassette.
13	Operate the shutter using the remote control. Do not run the shutter with the window open.
14	If necessary, adjust the shutter's end positions: open the window, press the button 5 times on the shutter's controller and then close the window. The shutter will automatically perform the end position calibration procedure.
15	Do not allow accumulation of snow on the shutter. For this purpose it is recommended to use devices preventing snow from sliding onto the shutter. Regularly remove any dirt that might obstruct operation of the shutter.

<b>PL</b>	Przed montażem należy zapoznać się z treścią instrukcji NC91V „INSTRUKCJA ORYGINALNA 2/3 Zasady montażu i użytkowania”.
1	Zdemontować listwę maskującą z komory baterii.
2	Otworzyć okno.
3a	Wykręcić wkręty znajdujące się w dolnej części skrzydła okna.
3b	Wykonać otwór w uchwycie dolnym rolety w miejscu uzależnionym od typu okna.
3c	Zamontować zespół uchwytu montażowego.
3d	Przykręcić profil do skrzydła okna wcześniej nawiercając otwory.
4, 4a, 4b, 4c	Użyć podkładek montażowych w celu wykonania otworów w kapturze okna.
5	Zamontować zespół blachy montażowej dobierając elementy w zależności od typu obłachowania.
6a, 6b, 6c, 6d	Zamontować profile montażowe rolety.
7a	Wprowadzić przewód zasilający roletę do otworu w oknie.
7b	Nasunąć roletę na uchwyty, przykręcić.
8	Wsunąć prowadnicę boczną w korpus rolety i przykręcić za pomocą dwóch wkrętów.
9	Połączyć ogranicznik otwarcia z prowadnicą rolety.
10	Powtórzyć czynności 8-9 dla prowadnicy lewej.
11	W przypadku okna elektrycznego wykonać dodatkowe czynności.
12	Zamontować elementy maskujące w kasecie rolety.
13	Sterować roletą za pomocą pilota. Nie uruchamiać rolety przy otwartym oknie.
14	W razie potrzeby przeprowadzić regulację pozycji krańcowych rolety: otworzyć okno, wcisnąć 5 razy przycisk na sterowniku rolety, a następnie zamknąć okno. Roleta samoczynnie wykona procedurę kalibracji pozycji krańcowych.
15	Nie dopuszczać do nagromadzenia śniegu na roletcie, w tym celu zaleca się stosowanie urządzeń zapobiegających zsuwaniu się śniegu na roletę. Regularnie usuwać zanieczyszczenia, które mogłyby utrudniać pracę rolety.



<b>BG</b>	Прочетете и приложете не носат отговорност за неспазване на съответните закони, строителни норми и изисквания за безопасност на използването на продукта, ариетите са, използването или одобрението на продукта.	<b>LT</b>	Gaminio ir patalpinės neįrašyti atsakomybės už tai, kad gamintojas, architektas, montuotojas ar pastato savininkas nesilaikys gamintojo statymų, taisyklių ir saugos reikalavimų.
<b>CZ</b>	Výrobce ani prodejce neodpovídá za nevhodné použití výrobku, za nevhodné použití výrobku, za nevhodné předpisy a bezpečnostní předpisy užíváním výrobku, architekt, montážníkem nebo vlastníkem je doložit.	<b>LV</b>	Kārtotājs un montāžas darbinieki atbildīgi par likumi, noteikumu un drošības prasību neievērošanu, no produkta lietotāja, arhitekta, uzstādītāja vai ekspluatētāja pusēs.
<b>DE</b>	Hersteller und Verkäufer übernehmen keine Haftung für Nichtbeachtung entsprechender Rechts- und Bauvorschriften sowie Sicherheitsanforderungen beim Einsatz des Produkts. Architekten, Monteur und Gebäudebesitzer.	<b>NL</b>	De fabrikant en verkoper zijn niet aansprakelijk voor schade van het product, de architect, de installateur of de eigenaar van het gebouw.
<b>EE</b>	Tootja ja müüja ei vastuta toote kasutamise, arhitekti, paigaldaja või hoone omaniku poolt tehtavate seaduste, määruste ja ohutusnõuete mittekäsitamise eest.	<b>PL</b>	Producent i sprzedawca nie ponosi żadnej odpowiedzialności za niespełnienie stosownych przepisów prawa, przepisów budowlanych i wymogów bezpieczeństwa przez użytkownika produktu, architekta, montażystę lub właściciela budynku.
<b>ES</b>	El fabricante y el vendedor no tienen ninguna responsabilidad por el incumplimiento de la ley, normas de construcción y exigencias de seguridad por parte del usuario del producto, arquitecto, instalador o propietario del edificio.	<b>PT</b>	O fabricante e o vendedor não têm nenhuma responsabilidade pelo o não cumprimento da lei, códigos de construção e as exigências de segurança por parte do usuário do produto, arquiteto, instalador ou proprietário do edifício.
<b>FR</b>	Le fabricant et le vendeur ne peuvent aucune responsabilité de ne pas respecter les lois applicables, les règlements sur les bâtiments et les exigences de sécurité de l'utilisateur du produit, l'architecte, l'installateur ou le propriétaire du bâtiment.	<b>RO</b>	Nici producătorul, nici distribuitorul nu își vor asuma răspundere în caz de nerespectare a normelor legale în vigoare, a legilor din domeniul construcțiilor sau a măsurilor de siguranță impuse de autoritatea producătorului, arhitectului, montajistului sau proprietarului clădirii.
<b>GB</b>	Manufacturer and Seller shall bear no liability for failure to comply with the applicable laws, building codes and safety equipment by the user of the product, architect, fitter or owner of the building.	<b>RU</b>	В случае несоблюдения архитектором, монтажником или владельцем здания строительных правил и норм безопасности ответственность с производителя и продавца снимается.
<b>HU</b>	A gyártó és a forgalmazó nem vállal semmilyen felelősséget a vonatkozó törvényi, építési és biztonsági előírások betartásának hiányáért, a felhasználó nem tartja felelősnek a jogszabályok, építési és biztonsági előírások betartásának hiányáért.	<b>SI</b>	Proizvajalec in prodajalec ne prejemata odgovornost za neupoštevane ustreznih pravnih in gradbenih pogojev ter varnostnih zahtev s strani uporabnika izdelka, projektanta, montažista ali lastnika objekta.
<b>IT</b>	Il produttore e il venditore non potranno essere ritenuti responsabili per il mancato rispetto, da parte dell'utente del prodotto, dei requisiti, dell'installazione e del proprietario dell'edificio, delle leggi vigenti, nonché del regolamento edilizio e di quelli relativi alla sicurezza.	<b>SK</b>	Výrobca a predávca nie poniesu žiadnu zodpovednosť za nevhodné použitie výrobku, za nevhodné predpisy a bezpečnostné predpisy užíváním výrobku, architektom, montážnym technikom alebo majiteľom objektu.